

All rights reserved. Reproduction without permission is strictly prohibited.

econiclay coverings

2025 Product Catalog

About US

We are PHOMI HOLDING, forerunner of eco-environmental material science! Founded in 2008, focusing on the research, development and production of econiclay-based materials, we are committed to providing carbon neutral material solutions to the world. With a start-up mentality, we develop up-to-date, sustainable material solutions for new challenges of living on our planet.






We use modern technology of the digital age, combined with knowledge of traditional craftsmanship, to create sustainable, eco-friendly, and inspiring materials with a human-centric emphasis.

As a technical enabler, we give our material solutions and knowledge to partners to spread it worldwide. Our mission is to create a better future for all by continuously expanding the applications of econiclay, providing innovative solutions that benefit society worldwide.

Our Vision: With our leadership in material science and technology, we aspire to work with more partners to shape a sustainable world, together. We believe that it is human nature to shape the world in the best way possible - from the first hut in ancient times to a blue planet worth living on in the future. In relentless pursuit of this vision, we will develop and deliver the best materials across a range of applications, now and into the future.



Phomi eCovering: The zero-carbon cladding material, balancing flexibility and performance

Items	Material				
	Plastic film	Plastic building material		3.0 eCovering	4.0 eCovering
		PVC	SPC		
Flexibility					
Thickness	1mm	2mm	4mm	4mm	3-4mm
Bendibility	∅ 2 mm	∅ 200 mm	∅ 300 mm	∅ 400 mm	∅ 500 mm
Fireproof rating (class)	F	C/B2	C/B2	A2	A2/A1
UV resistance	Outdoor, 6 months	Outdoor, 2 years	Outdoor, 3 years	Outdoor, 30 years	Outdoor, 50 years
Water resistance	-	Cannot be kept submerged	Cannot be kept submerged	Can be kept submerged	Can be kept submerged

3 Core Disadvantages of Excessive Flexibility

Flexibility is negatively correlated with building material performance: the greater the flexibility, the more serious the subsequent issues will be.

1. Poor UV Resistance: Higher flexibility → more plastics used → lower UV resistance.

2. Poor Wall Aesthetics: Higher flexibility → higher requirements for wall flatness → uneven wall surfaces are more likely to show after pasting, affecting the aesthetic appeal.

3. Poor Fire Safety: Higher flexibility → more plastics used → lower fire rating → stronger odor and more toxic smoke released during combustion.

4.0 eCovering's Scientific Solution

We first meet the core performance requirements of building materials, then adapt to the building's bending needs. The specific logic is as follows:

1. Performance FIRST: We meet THREE key criteria - ① Both UV resistance and fire rating have reached the highest level in the industry, with no odor during combustion; ② Complies with the universal standard for wall flatness, ensuring no unevenness after application; ③ Achieves near-zero carbon emissions throughout the entire product life cycle.

2. Optimal Flexibility: We optimize the ability of eCovering to bend, based on data and long time production know-how, resulting in eCovering 4.0 meeting the bending requirements of all buildings, while avoiding the performance loss caused by "unnecessary excessive flexibility."

eCovering series

eConiclay products all comply with "cradle to cradle" advanced material certification standards



1. Material Health

econiclay uses naturally-occurring materials such as soil, stone waste, and non-metallic tailings as its raw materials. A meticulous process of collection, sorting, and screening ensures the quality of these inputs. After being powdered, specialized surfactants are applied to create a protective, multi-layered network structure around the particles, effectively preventing the release of harmful substances. This commitment to material quality guarantees that econiclay products are free from any harmful residues or emissions.

2. Product Circularity

econiclay products are very easily recycled once they reach the end of their useful life. They don't break down into harmful substances, making recycling practical. Mixing econiclay with other materials can create durable and flexible products, reducing the need for plastic and extending product lifespans. This conserves resources and supports product circularity - one of the key pillars of sustainability.

3. Clean Air & Climate Protection

Our plant uses self-generated green electricity and steam as an energy source, and produces at low temperatures. In turn, this reduces our reliance on fossil fuels and significantly decreases greenhouse gas emissions. The entire production process is environmentally friendly with no smoke, harmful gases, or wastewater released. The inorganic properties of econiclay ensures that it doesn't emit gases or pollutants during use or recycling, contributing to cleaner air.

4. Water & Soil Stewardship

The econiclay production process conserves water resources by utilizing steam, which is efficiently transformed into production water during the condensation process. Simultaneously, the production process generates zero wastewater, making a positive contribution to the conservation of water resources. Importantly, econiclay products, being non-vitrified inorganic materials, have no detrimental impact on the soil after their lifecycle concludes, ensuring the long-term health of the land.

5. Social Fairness

The production process of econiclay products is designed to minimize waste, noise, and the release of harmful substances, ensuring that both workers and neighboring communities are not negatively impacted by hazardous materials or poor environmental conditions. Utilizing low-temperature manufacturing and self-generated green electricity/steam as an energy source also helps reduce environmental pollution, fostering social equity. Implementation of carbon-neutral measures further supports social sustainability. econiclay products boast a Class A fire rating, enhancing fire safety in application areas and thereby increasing community safety, ultimately contributing to social equity.

The full life cycle of eCovering

Zero carbon footprint for raw materials

The basic raw materials are based on inorganic solid waste such as urban construction waste, scraps of soil, stone, and ceramics, and non-metallic tailings.

Production process

The molding process only requires temperatures of 100°C, with green electricity and heat cogeneration both used.



Transportation

eCovering weighs only 4kg/m², versus natural stone which weighs 70kg/m². This drastically reduces the energy required during transportation by 94%.

Endless recycling

When dismantled, eCovering will disintegrate into small pieces and return to the soil without negative effect. Plant roots can easily enter the debris and grow, because the material has a self-respiratory function and maintains a specific water absorption rate.

PHOMI eCovering Products Series



eCovering has successfully obtained BUREAU VERITAS Product Carbon Footprint Verification Certification



PHOMI eCovering Core Value

High value and durability
eCovering showcases the texture and color of natural materials. Based on the inorganic-organic hybrid structure, it has excellent UV-resistant qualities. The service life of eCovering is several times longer than that of PVC wallcovering and flooring, reducing the frequency of replacement and the waste of resources.

Replacement of energy-intensive materials
The unique active bonds and low-temperature molding can create more functional products to meet the needs of different settings, becoming an ideal substitute for traditional materials such as tiles, stones, cement, wood, leather, plastics, etc.

A1 fire rating
Thanks to its inorganic properties, eCovering has a fire resistance rating of A1. This provides a better safeguard compared to flammable plastic and wood surface materials.

Environmental Protection and Sustainability

1. Not relying on specific mineral resources diminishes the adverse impact of resource extraction on the environment.
2. The low temperature molding process decreases energy consumption and eliminates waste gas emissions, and wastewater disposal.
3. Inorganic solid waste can be repeatedly reused and recycled, greatly limiting the negative impact on the environment.

The carbon emission of 1m² of eCovering is **1.02kg CO₂e**.

eCovering produces **95.4% CO₂e** than conventional **tiles**

eCovering produces **98.63% CO₂e** than conventional **stone**



**Material technology
integrated with 3D-tech
empowers traditional
stone industry for
transformation**

Stone Series



**Greece
Travertine**

Anna Light Grey



Generation	Standard size(mm)	Thickness(mm)	Packaging(mm)	Pcs/box	Sqm/box
4.0	1200x600	3.2(±0.5)	1220x620x75	14	10.08



Coral Travertine

Stratus Light Grey



Generation	Standard size(mm)	Thickness(mm)	Packaging(mm)	Pcs/box	Sqm/box
4.0	1200x600	3.2(±0.5)	1220x620x75	14	10.08



Rome Travertine

Andes Yellow



Generation	Standard size (mm)	Thickness (mm)	Packaging (mm)	Pcs/box	Sqm/box
3.0	1200x600	3.3(±1)	1220x620x75	18	12.96
	2400x1200				
	(3000-6000mm)x1200				
<small>Sizes above 2400x1200 are packed with wooden case as per order quantity (subject to packaging fee)</small>					
4.0	1200 x 600	3.2(±0.5)	1220x620x75	16	11.52



Lane Crawford Travertine

Anna White

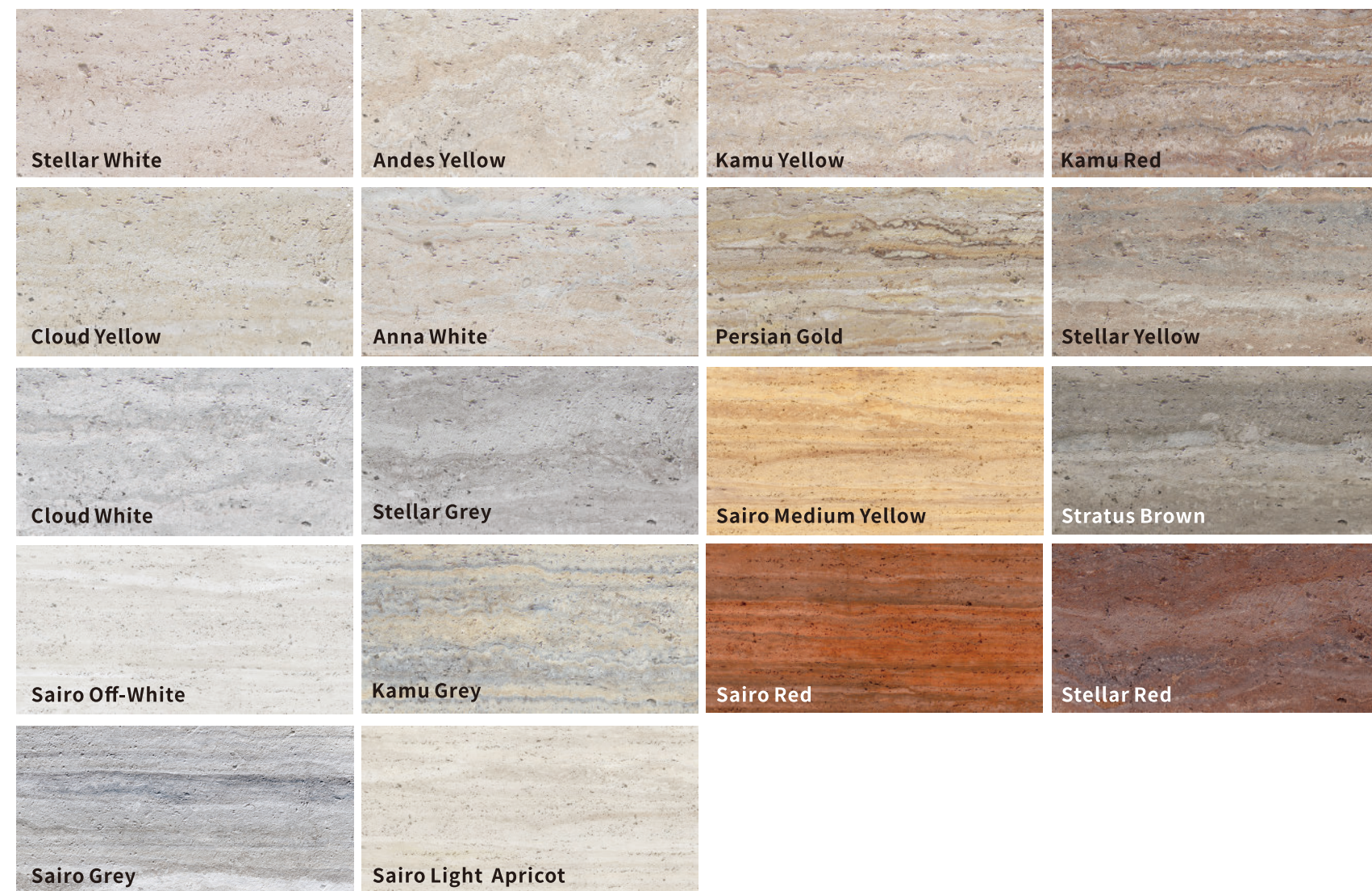


Generation	Standard size(mm)	Thickness(mm)	Packaging(mm)	Pcs/box	Sqm/box
4.0	1200x600	3.2(±0.5)	1220x620x75	14	10.08



Ghana Travertine

Sairo Grey



Generation	Standard size (mm)	Thickness (mm)	Packaging (mm)	Pcs/box	Sqm/box
3.0	1200x600	2.8(±1)	1220x620x75	18	12.96
	2400x1200				
<small>Sizes above 2400x1200 are packed with wooden case as per order quantity (subject to packaging fee)</small>					



Anthill Travertine

Stellar Yellow



Generation	Standard size(mm)	Thickness(mm)	Packaging(mm)	Pcs/box	Sqm/box
4.0	1200x600	3.2(±0.5)	1220x620x75	16	11.52



Cloud Silk Travertine

Ash Grey

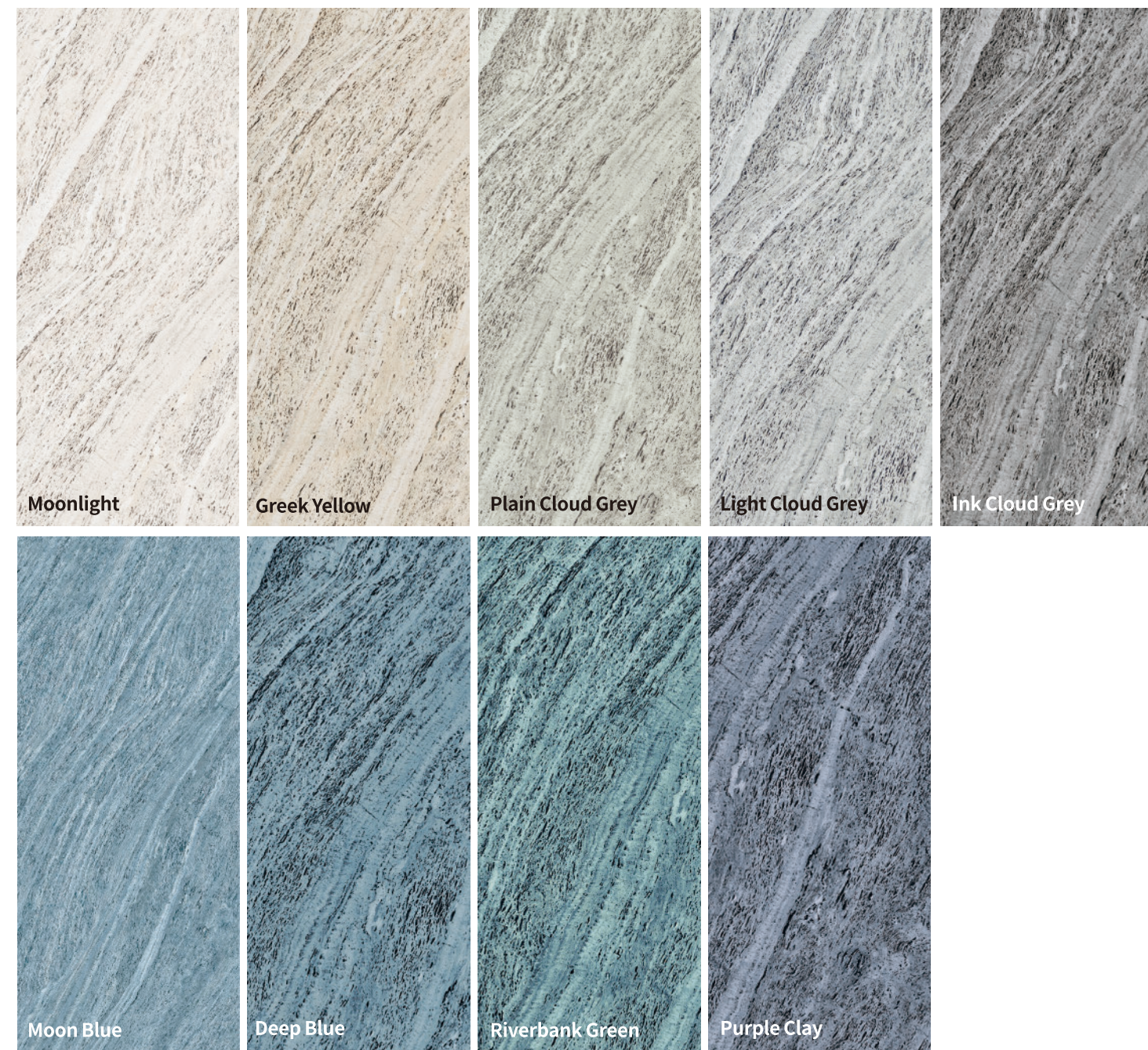


Generation	Standard size(mm)	Thickness(mm)	Packaging(mm)	Pcs/box	Sqm/box
4.0	1200x600	1-4	1220x620x75	14	10.08



Oceanic Travertine

Greek Yellow



Moonlight

Greek Yellow

Plain Cloud Grey

Light Cloud Grey

Ink Cloud Grey

Moon Blue

Deep Blue

Riverbank Green

Purple Clay

Generation	Standard size(mm)	Thickness(mm)	Packaging(mm)	Pcs/box	Sqm/box
4.0	1200 x 600	3,2(±0.5)	1220x620x75	14	10,08
3.0	2800x1200	2-6	Sizes above 2800x1200 are packed with wooden case as per order quantity (subject to packaging fee)		



Rough Surface

Castol Yellow

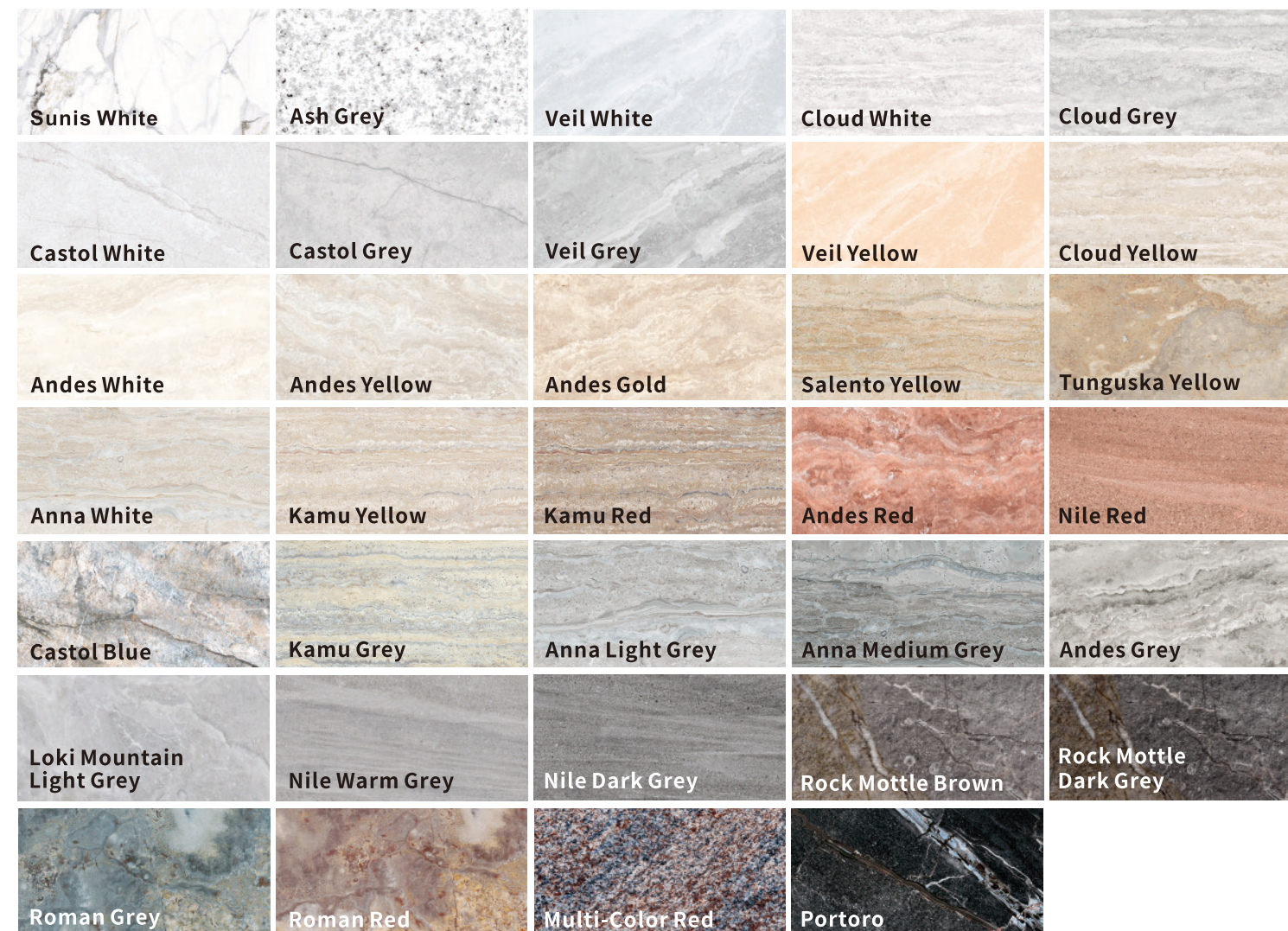


Generation	Standard size(mm)	Thickness(mm)	Packaging(mm)	Pcs/box	Sqm/box
3.0	1200 x 600	1-6 natural unevenness	1220 x 620 x 75	12	8.64
	2400 x 1200				
	(3000-6000) x 1200				
<small>Sizes above 2400x1200 are packed with wooden case as per order quantity (subject to packaging fee)</small>					



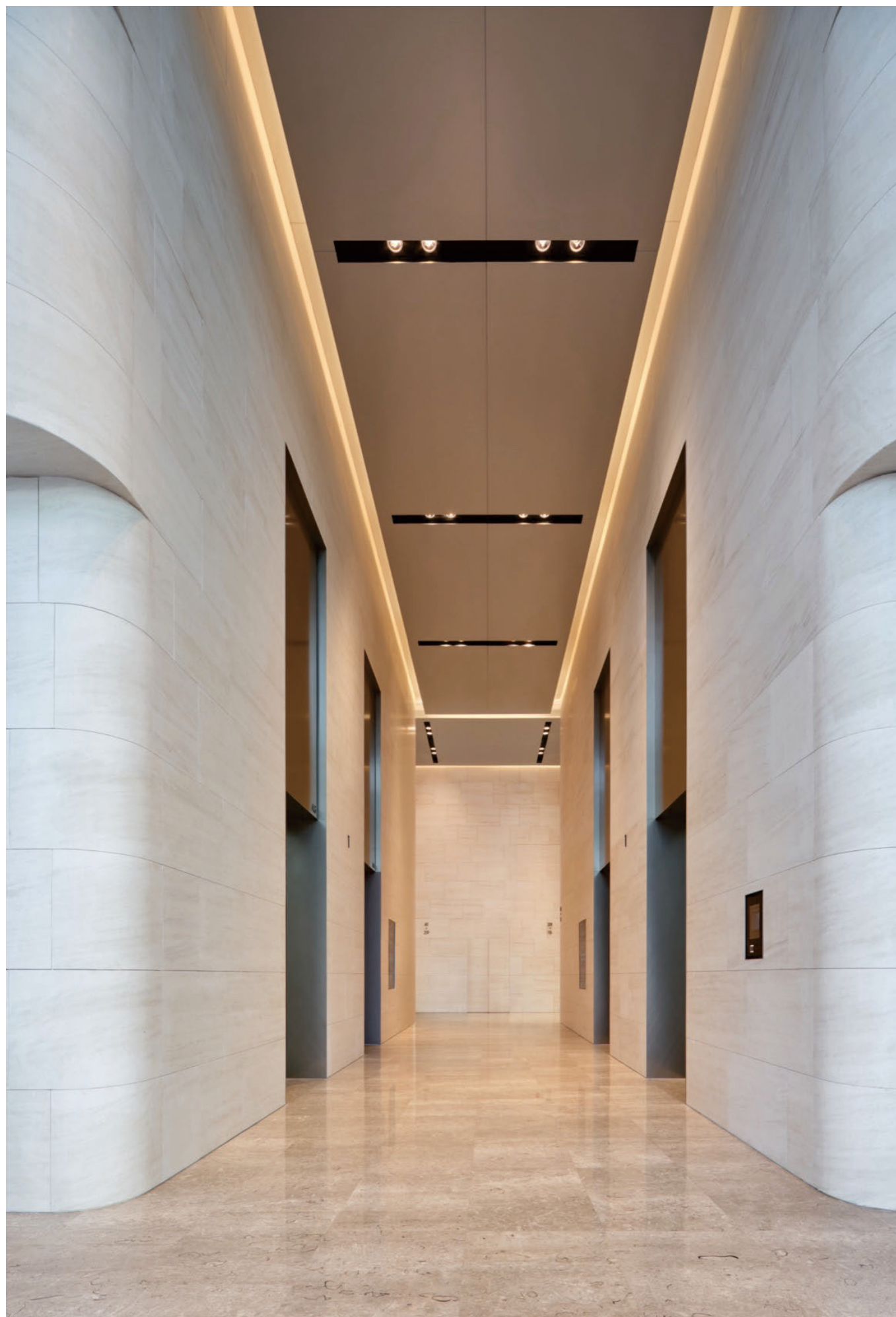
Marble

Veil Grey



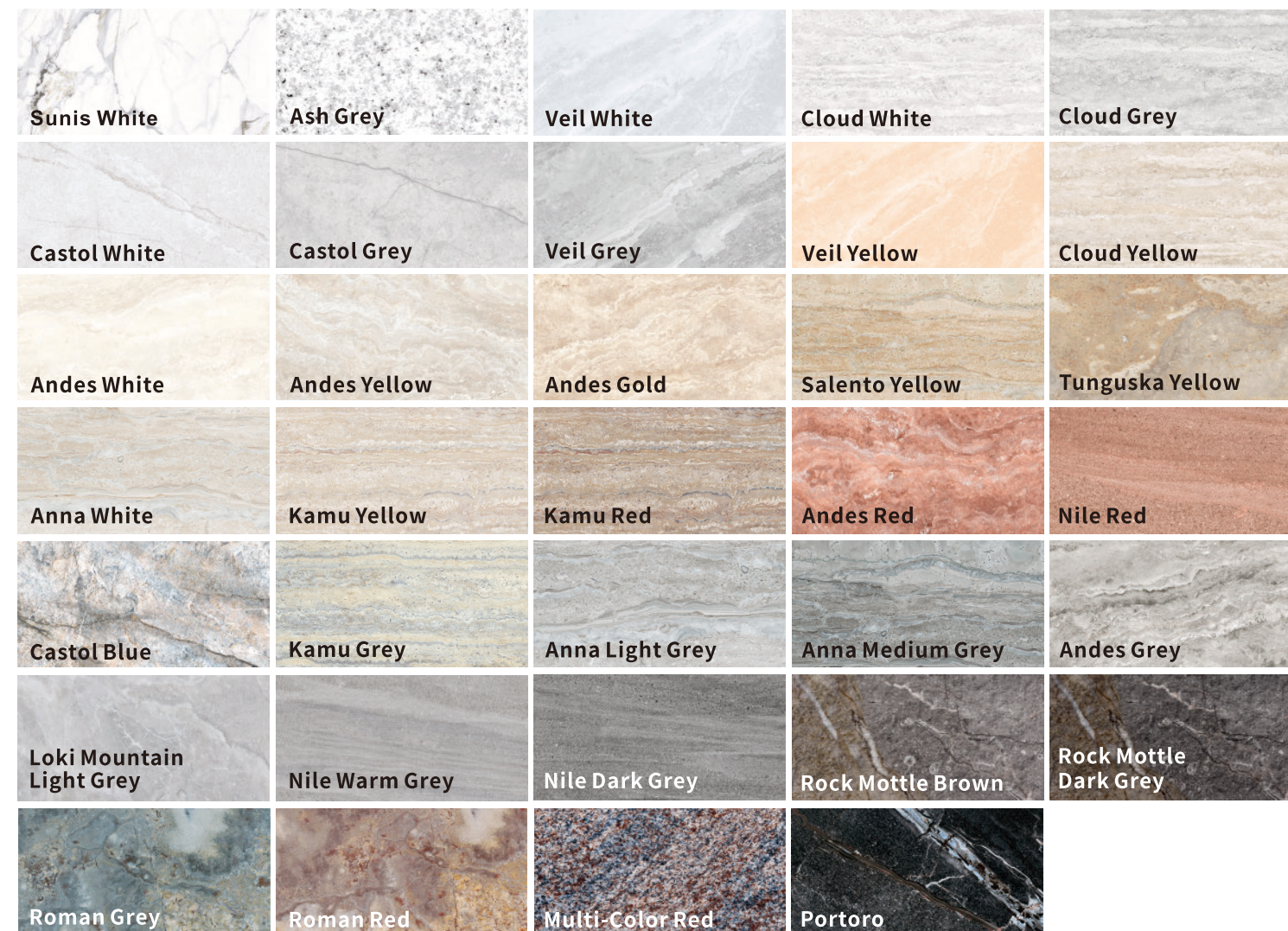
Generation	Standard size(mm)	Thickness (mm)	Packaging (mm)	Pcs/box	Sqm/box
3.0	1200 x 600	2.8(±1)	1220 x 620 x 75	20	14.4
	2400 x 1200				
	(3000-6000) x 1200				
4.0	1200 x 600	3.2(±0.5)	1220 x 620 x 75	16	11.52

Sizes above 2400x1200 are packed with wooden case as per order quantity (subject to packaging fee)



Polished Stone

Castol White



Sunis White	Ash Grey	Veil White	Cloud White	Cloud Grey
Castol White	Castol Grey	Veil Grey	Veil Yellow	Cloud Yellow
Andes White	Andes Yellow	Andes Gold	Salento Yellow	Tunguska Yellow
Anna White	Kamu Yellow	Kamu Red	Andes Red	Nile Red
Castol Blue	Kamu Grey	Anna Light Grey	Anna Medium Grey	Andes Grey
Loki Mountain Light Grey	Nile Warm Grey	Nile Dark Grey	Rock Mottle Brown	Rock Mottle Dark Grey
Roman Grey	Roman Red	Multi-Color Red	Portoro	

Generation	Standard size (mm)	Thickness (mm)	Packaging (mm)	Pcs/box	Sqm/box
4.0	1200 x 600	3.2(±0.5)	1220 x 620 x 75	16	11.52



Polish Concrete Stone

Fog



Generation	Standard size(mm)	Thickness (mm)	Packaging (mm)	Pcs/box	Sqm/box
3.0	1200 x 600	2.8(±1)	1220 x 620 x 75	20	14.4
	2400 x 1200				
	(3000-6000) x1200				
4.0	1200 x 600	3.2(±0.5)	1220 x 620 x 75	16	11.52

Sizes above 2400x1200 are packed with wooden case as per order quantity (subject to packaging fee)



Four-Hole Polish Concrete Stone

Greyish Desert



Generation	Standard size(mm)	Thickness (mm)	Packaging (mm)	Pcs/box	Sqm/box
4.0	1200 x 600	3.2(±0.5)	1220 x 620 x 75	16	11.52



Rusty Slab

Nuée Ardente



Generation	Standard size(mm)	Thickness (mm)	Packaging (mm)	Pcs/box	Sqm/box
3.0	1200 x 600	2.8(±1)	1220 x 620 x 75	20	14.4
	2400 x 1200				
	(3000-6000) x1200				
4.0	1200 x 600	3.2(±0.5)	1220 x 620 x 75	16	11.52

Sizes above 2400x1200 are packed with wooden case as per order quantity (subject to packaging fee)



Mount Celestial

Veil Grey



Generation	Standard size(mm)	Thickness (mm)	Packaging (mm)	Pcs/box	Sqm/box
3.0	1200 x 600	1-4 natural unevenness	1220 x 620 x 75	18	12.96
	2400 x 1200				
	2700 x 1200				
	(3000-6000) x 1200				

Sizes above 2400x1200 are packed with wooden case as per order quantity (subject to packaging fee)



Generation	Standard size(mm)	Thickness (mm)	Packaging (mm)	Pcs/box	Sqm/box
3.0	1200 x 600	1-4	1220 x 620 x 75	20	14.4
	2400 x 1200				
	(3000-6000) x 1200				
4.0	1200 x 600	1-4.5	1220 x 620 x 75	14	10.08

Sizes above 2400x1200 are packed with wooden case as per order quantity (subject to packaging fee)

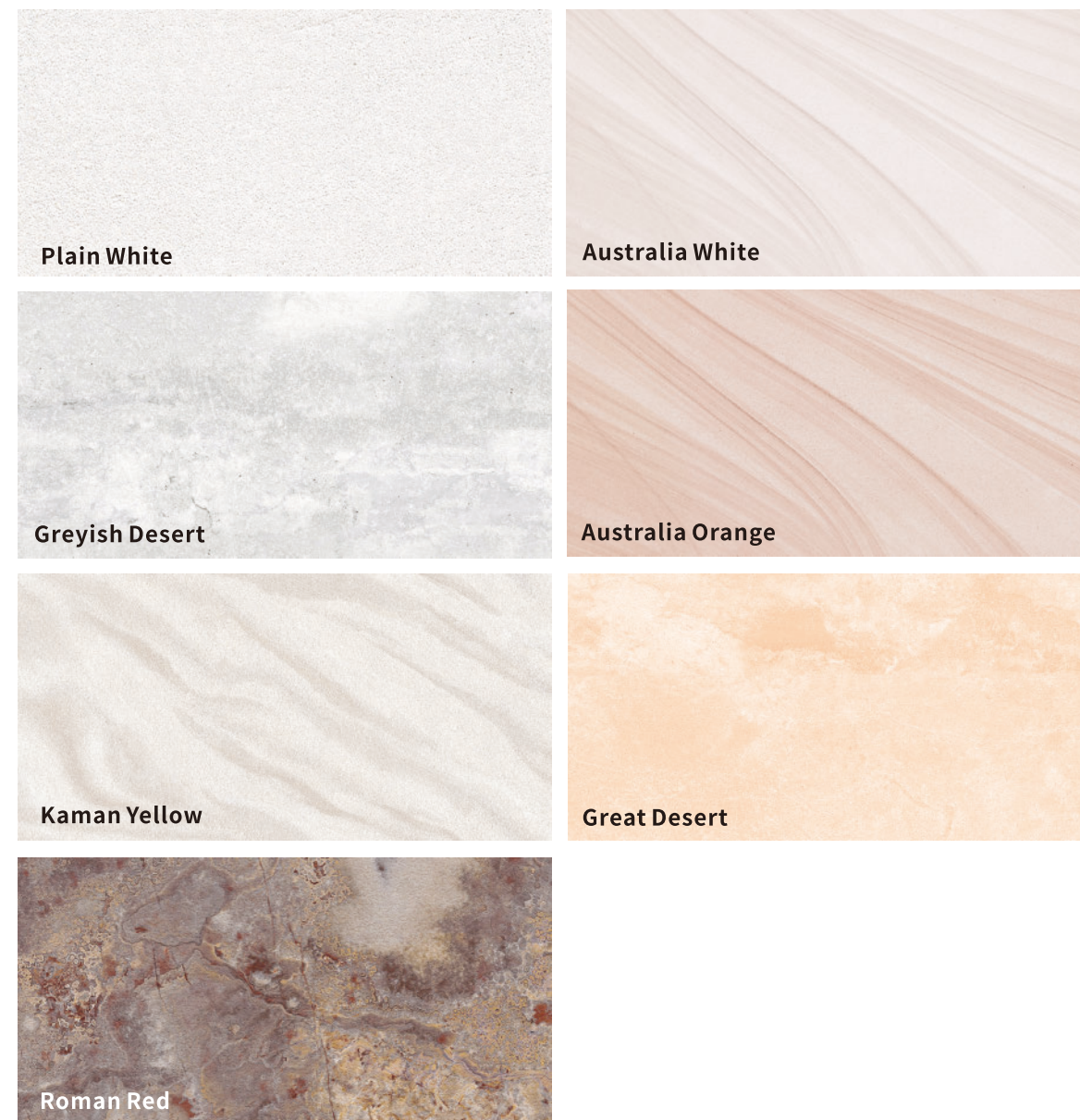


Generation	Standard size(mm)	Thickness(mm)	Packaging(mm)	Pcs/box	Sqm/box
3.0	1200 x 600	1-8			
	2400 x 1200	natural unevenness	Sizes above 2400x1200 are packed with wooden case as per order quantity (subject to packaging fee)		



Sandstone

Australia Orange



Generation	Standard size (mm)	Thickness (mm)	Packaging (mm)	Pcs/box	Sqm/box
3.0	1200 x 600	2.8(±1)	1220 x 620 x 75	20	14.4
	2400 x 1200		2420 x 1230 x 14	4	11.52
4.0	1200 x 600	3.2(±0.5)	1220 x 620 x 75	16	11.52



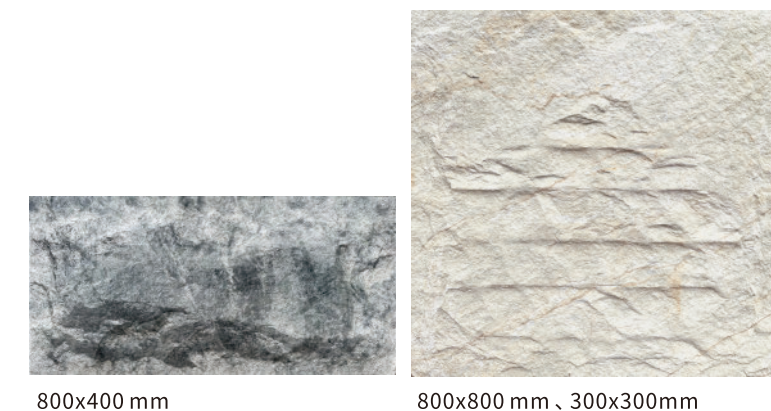
Rammed Earth Wall

Egyptian Yellow

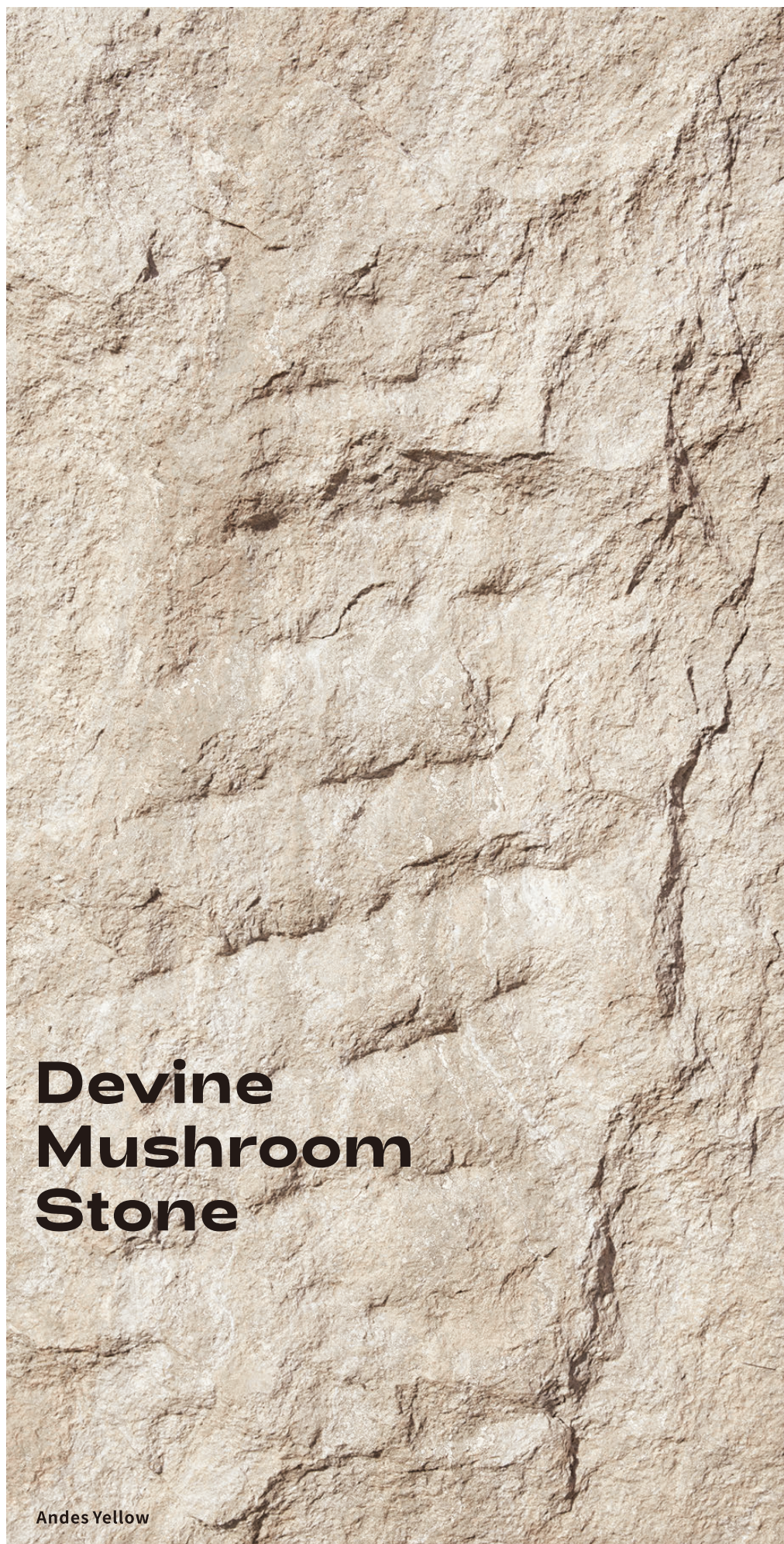


Generation	Standard size(mm)	Thickness(mm)	Packaging(mm)	Pcs/box	Sqm/box
3.0	1200 x 600	1-5	1220 x 620 x 75	16	11.52
	2400 x 1200				

Sizes above 2400x1200 are packed with wooden case as per order quantity (subject to packaging fee)



Generation	Standard Size (mm)	Thickness(mm)	Packaging(mm)
3.0	800 x 400	1-10 natural unevenness	Wooden case as per order quantity (subject to packaging fee)
	800 x 800		
4.0	300 x 300		



Devine Mushroom Stone

Andes Yellow



Generation	Standard Size (mm)	Thickness(mm)	Packaging(mm)
3.0	800x400	1-8 natural unevenness	Wooden case as per order quantity (subject to packaging fee)
	1200x600		
	2400x1200		



Oblique Mushroom

Nile Light Yellow



Generation	Standard Size (mm)	Thickness(mm)	Packaging(mm)	Pcs/box	Sqm/box
3.0	1200x 600	1-8 natural unevenness	1220x 620x75	8	5.76
	2400x 1200		Sizes above 2400x1200 are packed with wooden case as per order quantity (subject to packaging fee)		



Concrete Pouring Slab

Castle Rock Gray



Generation	Standard Size (mm)	Thickness(mm)	Packaging(mm)
3.0	1400 x 600	1-3.5	Wooden case as per order quantity (subject to packaging fee)
	2800 x 1200		



Arcuate Rock

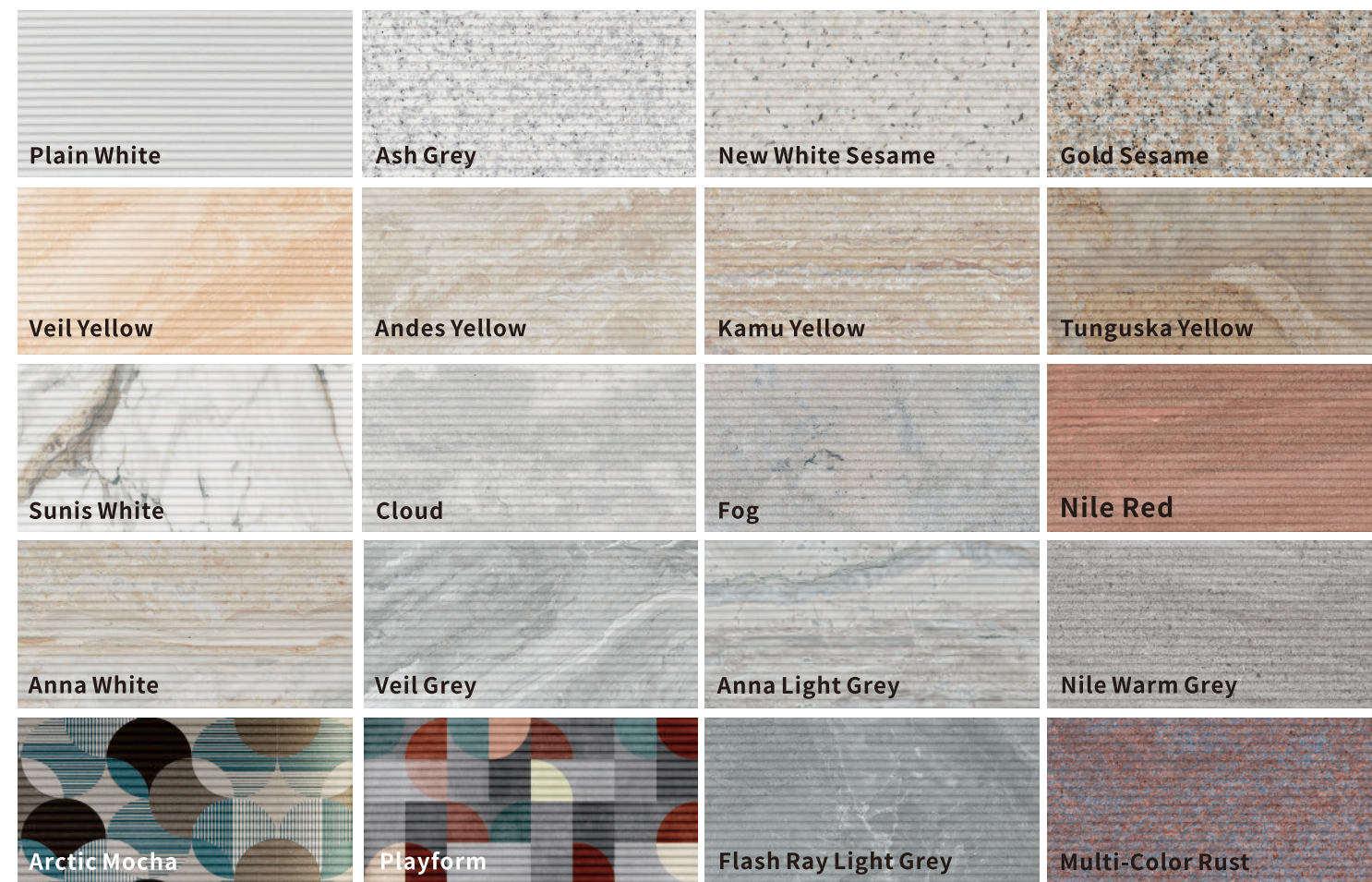
Thin Clouds Gray



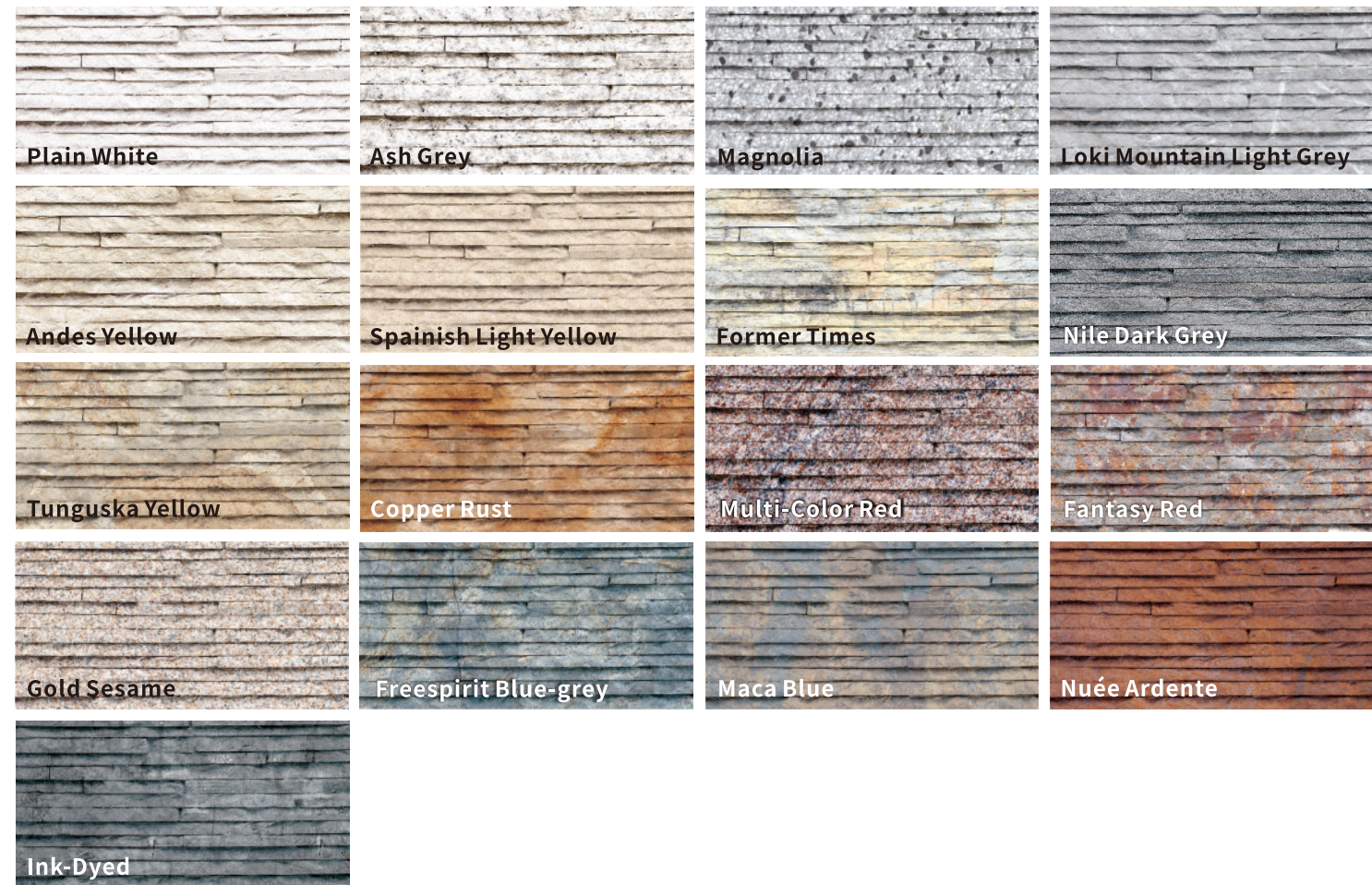
Plain White Monna Grey Veil White Anna Light Grey Thin Clouds Grey Nile Warm Grey
 Kaman Yellow Anna White Andes Yellow Kamu Yellow Former Times Autumn Yellow
 Loozee Plain Grey Medium Grey Maca Blue Tunguska Yellow Gold Sesame Copper Rust

Generation	Standard Size (mm)	Thickness(mm)	Packaging(mm)	Pcs/box	Sqm/box
3.0	1400 x 600	1-8 natural unevenness	1420 x 620x75	12	10.08
	2800 x 1200				

Sizes above 2400x1200 are packed with wooden case as per order quantity (subject to packaging fee)



Generation	Standard Size (mm)	Thickness(mm)	Packaging(mm)	Pcs/box	Sqm/box
4,0	1200 x 600	1-4,5			



Generation	Standard Size (mm)	Thickness(mm)	Packaging(mm)	Pcs/box	Sqm/box
3.0	600 x 300	1-9 natural unevenness	620 x 320 x 90	8	1.44
	1200 x 600		1220 x 620 x 75	6	4.32



35 Piece Stone

Tunguska Yellow



Plain White

Ash Grey

Loki Mountain Light Grey

Annā Light Grey

Andes Yellow

Kamū Yellow

Gold Sesame

Medium Grey

Cloud Yellow

Mount Lion Yellow

Tunguska Yellow

Multi-Color Rust

Anna White

Former Times

Copper Rust

Fantasy Red

Maca Blue

Multi-Color Red

Freespirit Blue-grey

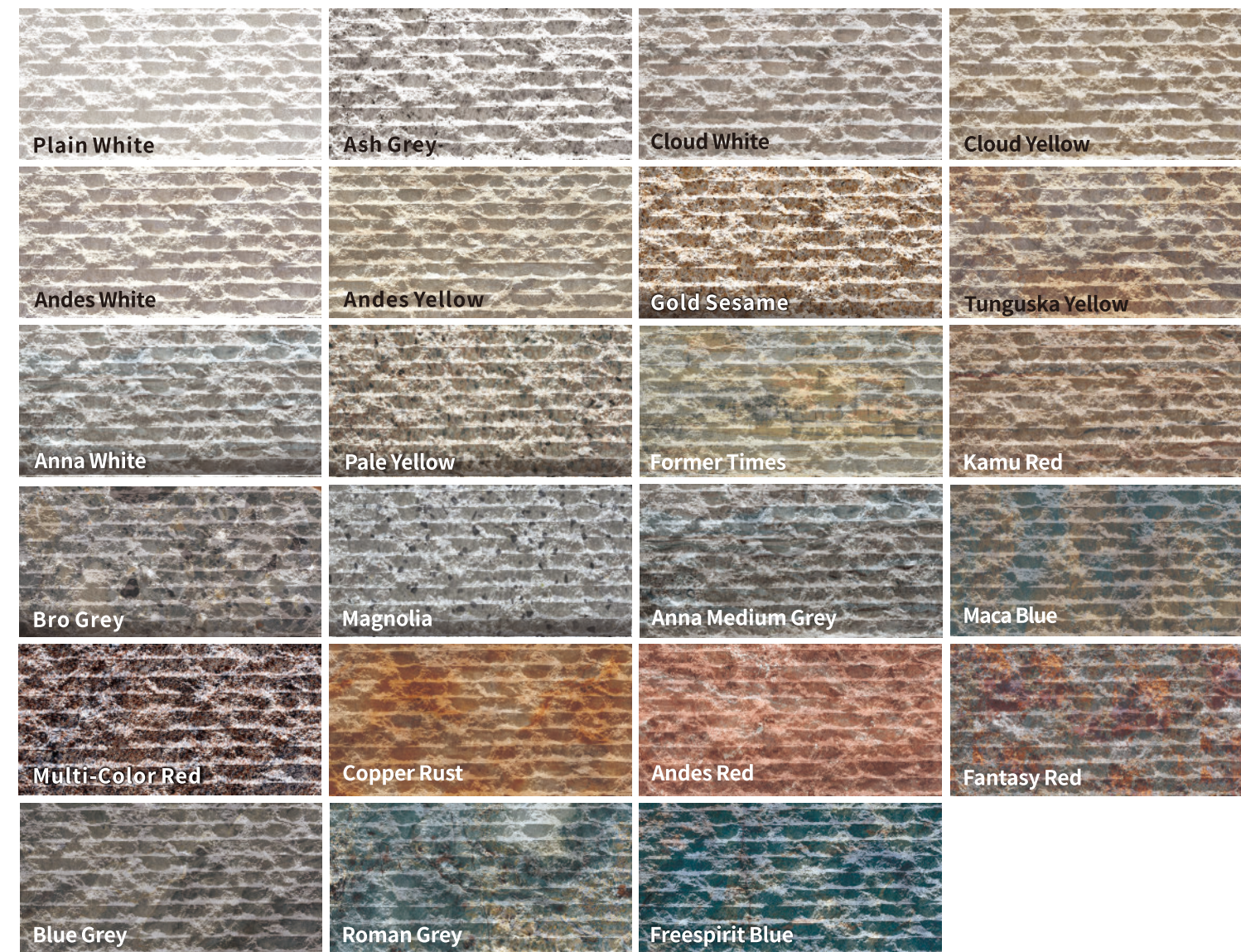
Freespirit Blue

Generation	Standard Size (mm)	Thickness(mm)	Packaging(mm)	Pcs/box	Sqm/box
3.0	600 x 300	1-10 natural unevenness	620 x320x90	10	1.8
	1200 x 600		1220 x 620x75	8	5.76



Chiseled Stone

Andes Yellow



Generation	Standard Size (mm)	Thickness(mm)	Packaging(mm)	Pcs/box	Sqm/box
3.0	1200 x 600	1-8.5	1220 x 620 x75	8	5.76
	2400 x 1200		2420 x 1230 x14	2	5.76



Oman Linear Stone

Kamu Yellow

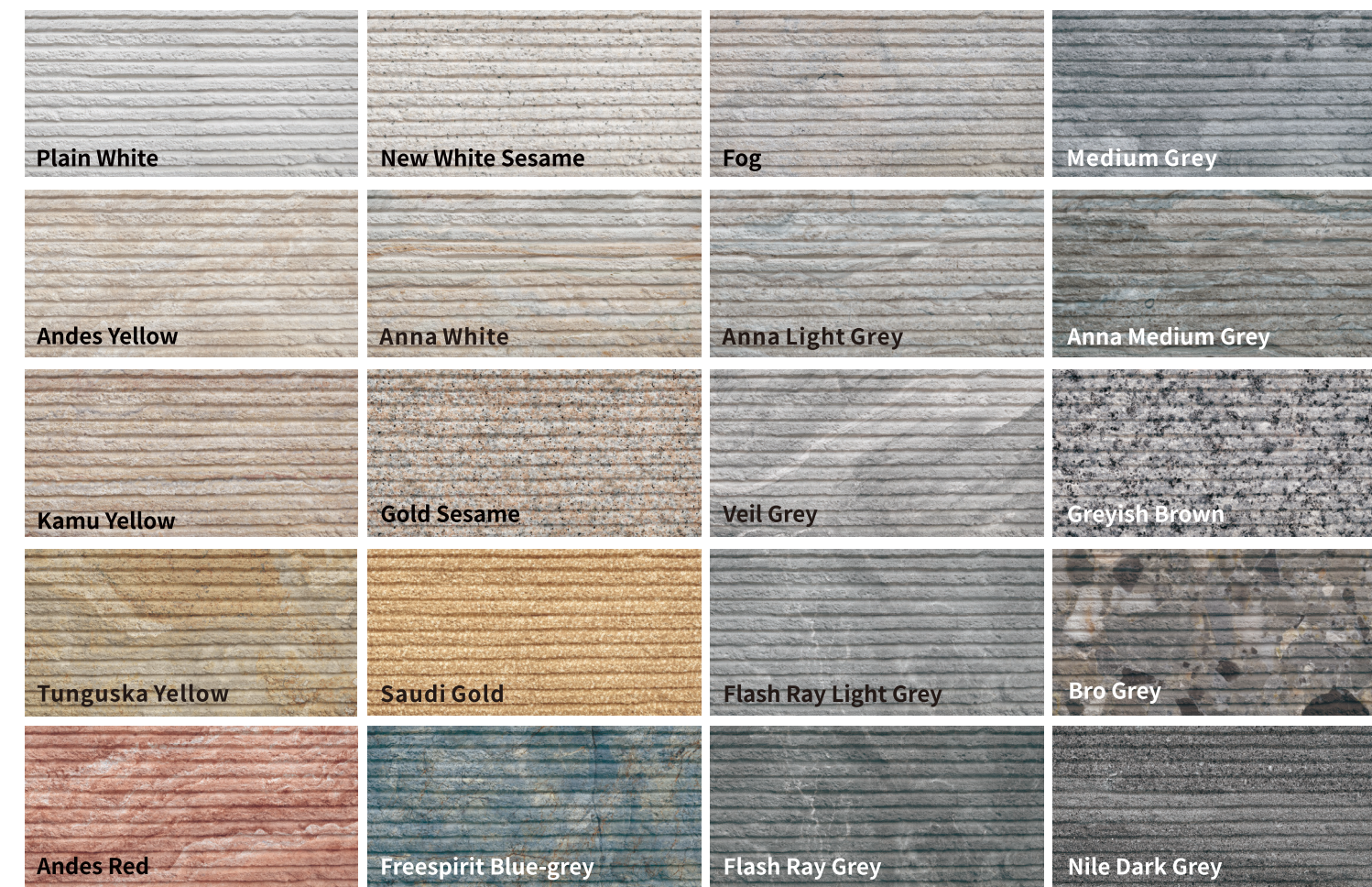


Generation	Standard Size (mm)	Thickness(mm)	Packaging(mm)	Pcs/box	Sqm/box
3.0	1350x600	1-9	1380 x 620 x65	8	6.48
	2700x600				
	(2700-6000) x1200				
<small>Sizes above 2400x1200 are packed with wooden case as per order quantity (subject to packaging fee)</small>					
4.0	1200x600	6.2 (±0.5)	1220 x 620 x65	8	5.76



Flat Linear Stone

Tunguska Yellow

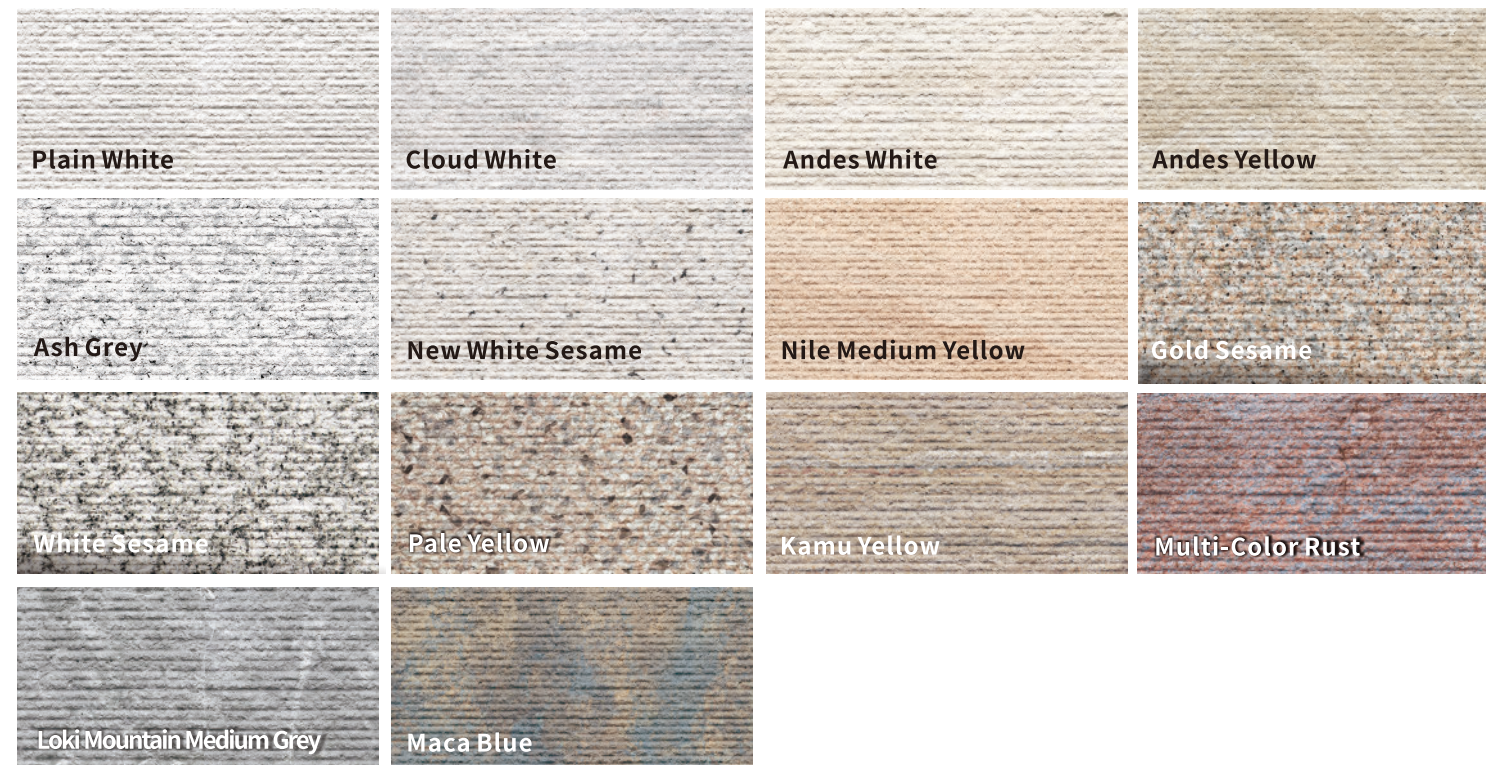


Generation	Standard Size (mm)	Thickness(mm)	Packaging(mm)	Pcs/box	Sqm/box
4.0	1200 x 600	1-8			

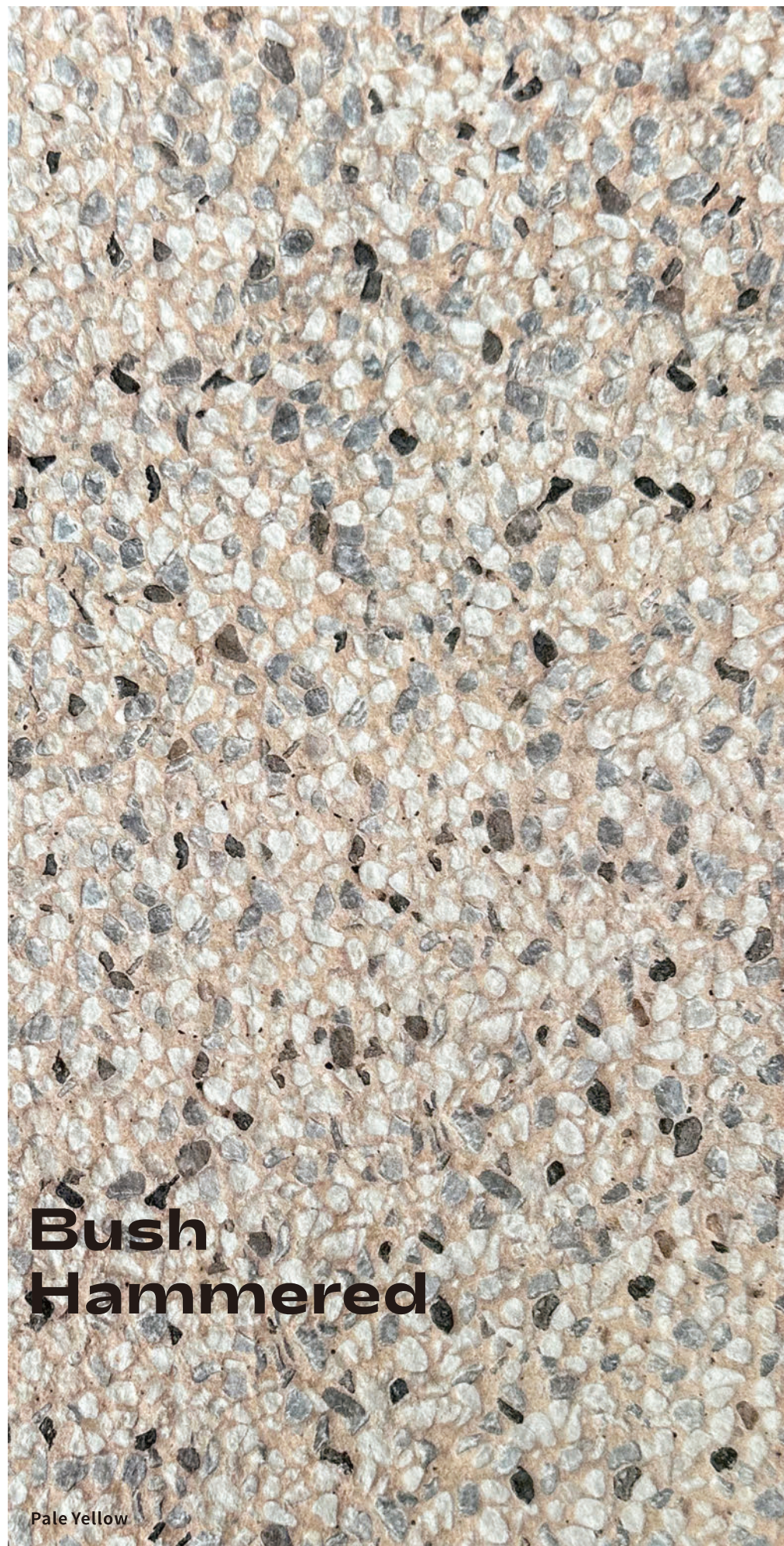


Stone Ridged

Andes White



Generation	Standard Size (mm)	Thickness(mm)	Packaging(mm)	Pcs/box	Sqm/box
3.0	1200 x 600	1-4.5	1220 x 620 x75	16	11.52
	2400 x 1200		2420 x 1230 x14	4	11.52



**Bush
Hammered**

Pale Yellow



Generation	Standard Size (mm)	Thickness(mm)	Packaging(mm)	Pcs/box	Sqm/box
3.0	900 x 600	1-3.5	920 x 620 x 80	20	10.08
	1380 x 600		1400 x 620 x 65	18	14.904
	2760 x 1200		Sizes above 2400x1200 are packed with wooden case as per order quantity (subject to packaging fee)		
4.0	1200 x 600	1-4	1220 x 620	14	10.08



Scabbled Stone

Tunguska Yellow



Generation	Standard Size (mm)	Thickness(mm)	Packaging(mm)	Pcs/box	Sqm/box
4.0	1200 x 600				



Butterfly Stone

Spanish Beige



Generation	Standard Size (mm)	Thickness(mm)	Packaging(mm)	Pcs/box	Sqm/box
3.0	2600 x 1200	3.5(±1)			

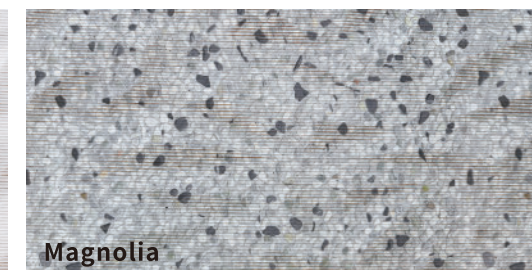


3D Papel

Nile Warm Grey



Plain White



Magnolia



Ash Grey



Nile Light Yellow



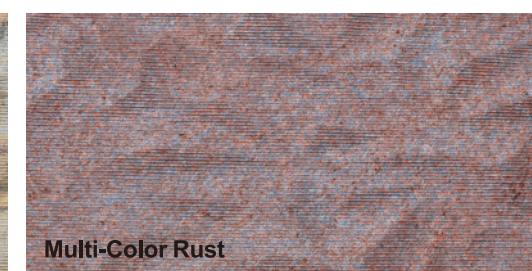
Andes Yellow



Maca Blue



Former Time



Multi-Color Rust



Copper Rust

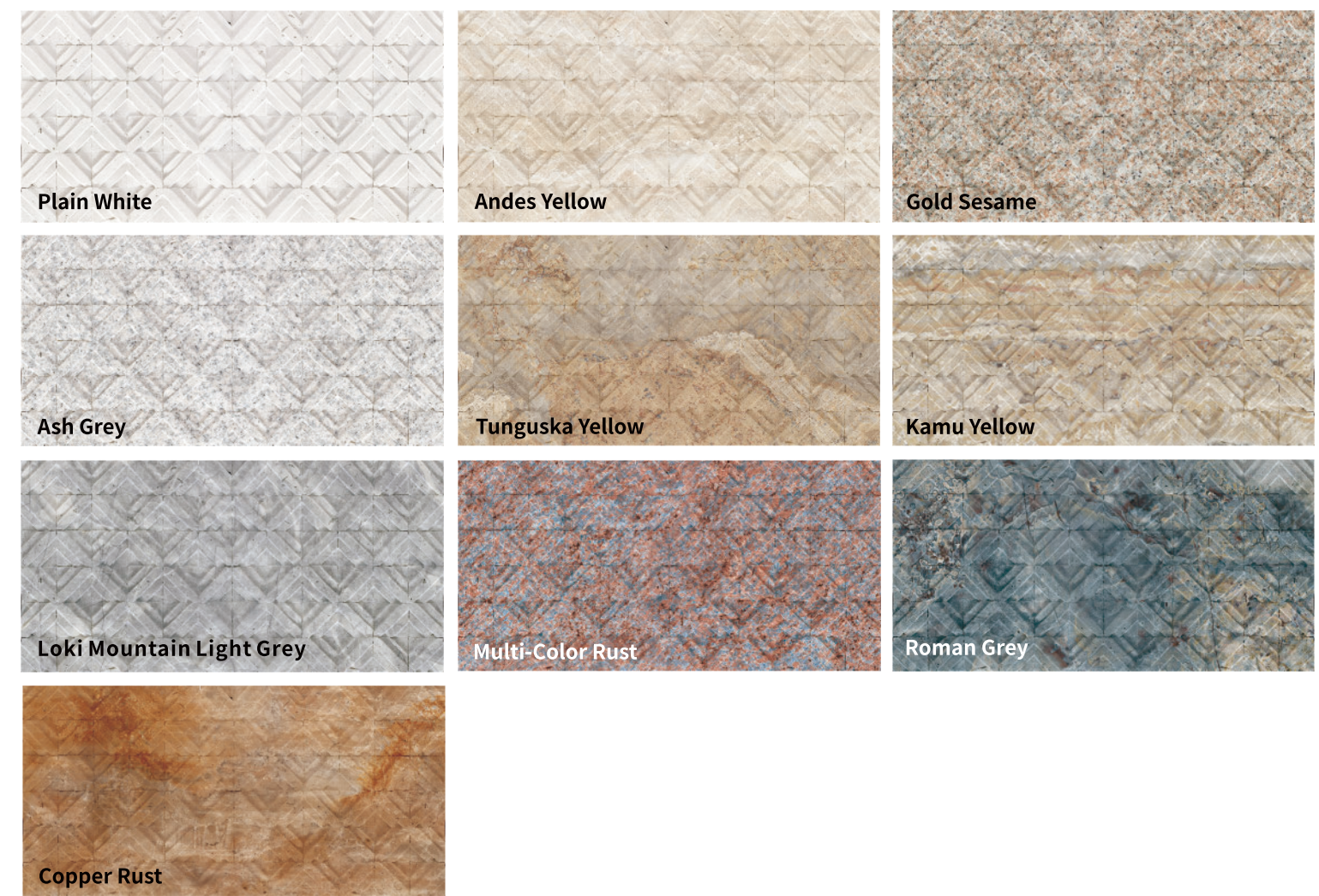
Generation	Standard Size (mm)	Thickness(mm)	Packaging(mm)	Pcs/box	Sqm/box
3.0	1200 x 600	1-9	1220 x 620x75	8	5,76
	2400 x 1200				

Sizes above 2400x1200 are packed with wooden case as per order quantity (subject to packaging fee)

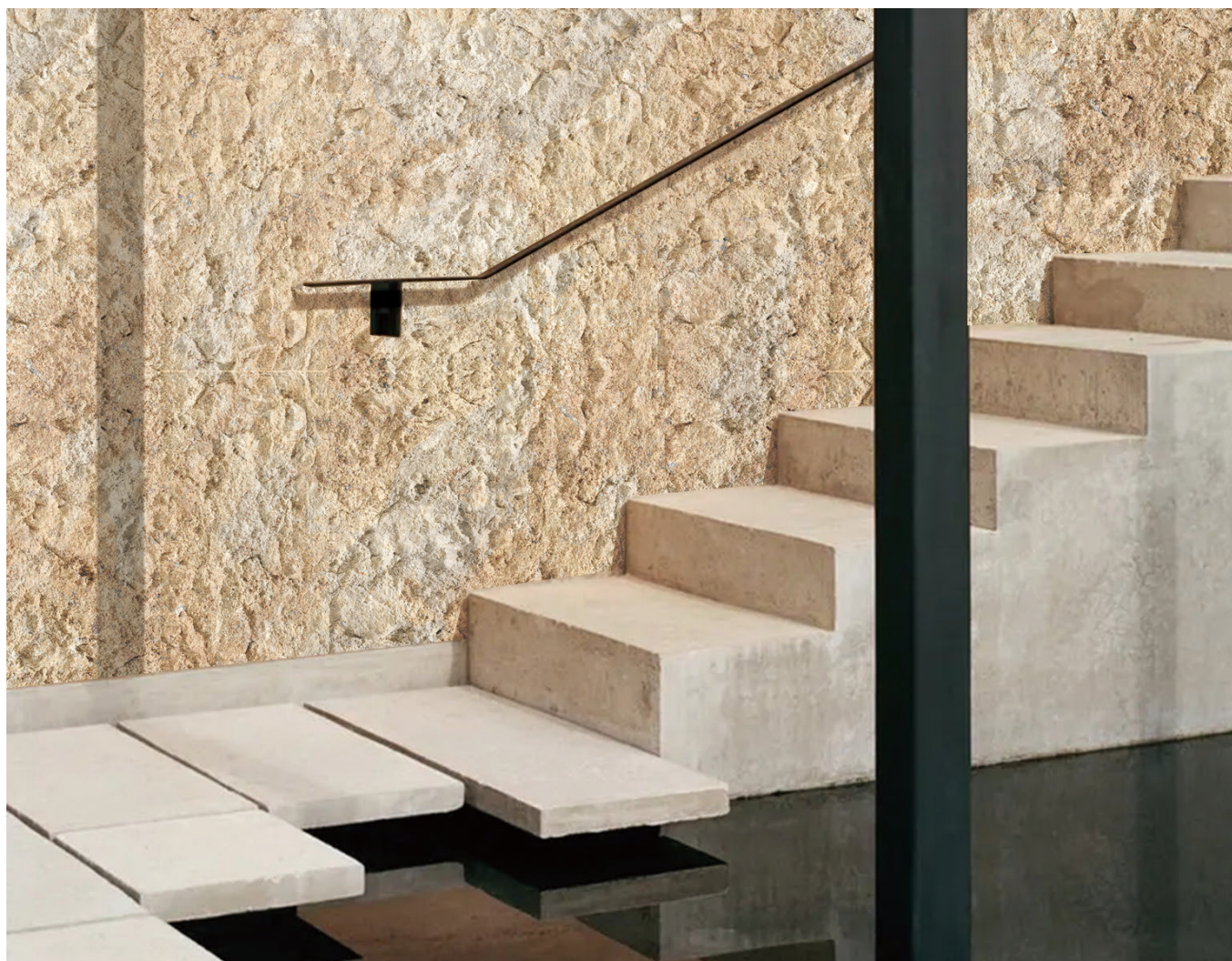


Stackle Square

Andes Yellow



Generation	Standard Size (mm)	Thickness(mm)	Packaging(mm)	Pcs/box	Sqm/box
3.0	600 x 600	1-7.5	620x620x90	12	4.32
4.0	1200 x 600		1220x620x75	10	7.2



Generation	Standard Size (mm)	Thickness(mm)	Packaging(mm)	Pcs/box	Sqm/box
3.0	1200 x 600	1-10 natural unevenness	1220x620x75	6	4.32
	1200 x 1200				
	2400 x 1200				

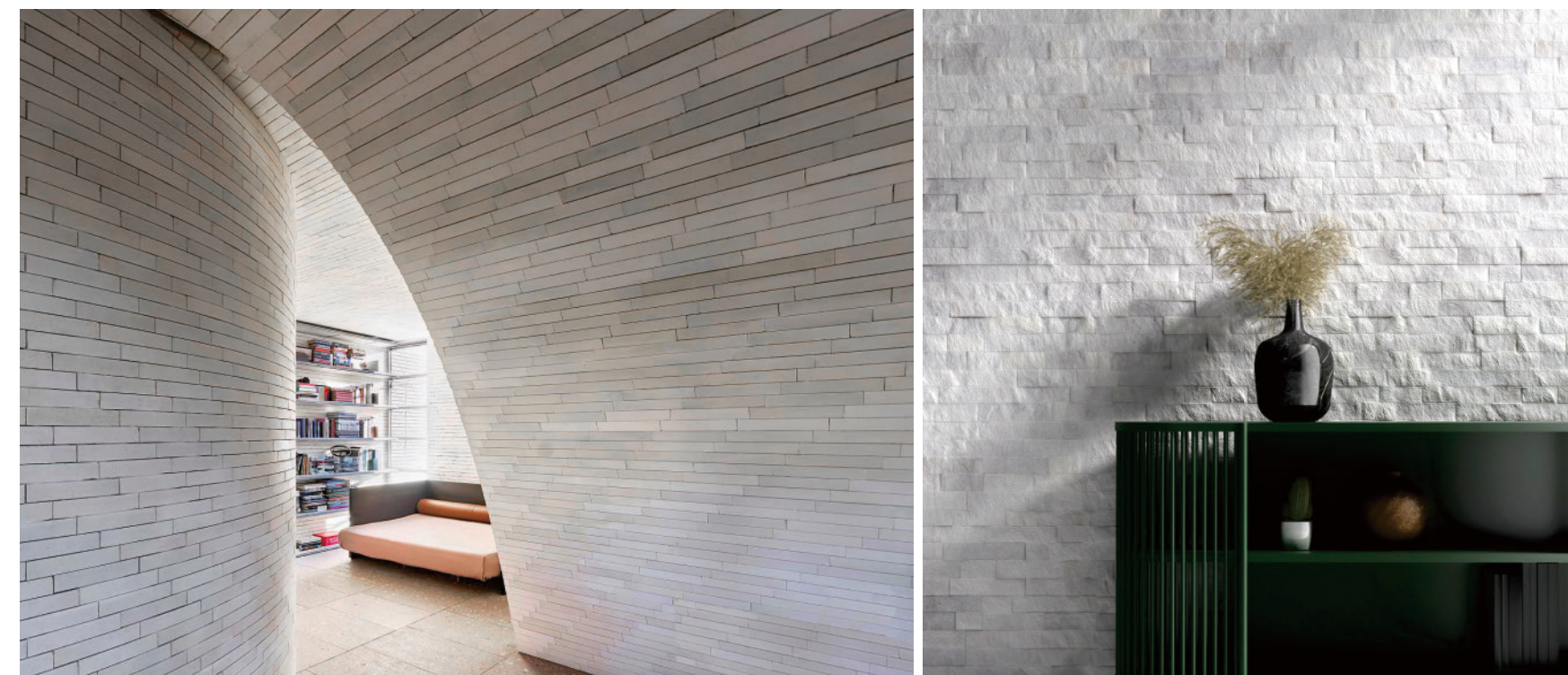
Stone Strip Combo

Texture options



Primary colors: Plain White

Texture	Generation	Standard Size (mm)	Thickness(mm)	Packaging(mm)	Pcs/box	Sqm/box
Stone Strip - Rockface Stone	3.0	480x120	1-10 natural unevenness			
		960x120				
Stone Strip - Travertine	3.0	480x120	3.3(±1)			
		960x120				
Stone Strip - Stone Ridged	3.0	480x120	1-3.5			
		960x120				
Stone Strip - Devine Mushroom Stone	3.0	480x120	1-8 natural unevenness			
		960x 120				
Stone Strip - Bush Hammered	3.0	480x120	1-3.5			
		960x120				
Stone Strip - Rough Surface	3.0	480x120	1-6 natural unevenness			
		960x120				
Stone Strip - Marble	3.0	480x120	2.8(±1)			
		960x120				
Stone Strip - Sandstone	3.0	480x120	2.8(±1)			
		960x120				
Stone Strip - Mount Celestial	3.0	480x120	1-4			
		960x120				



Example of mixed effect - partial view



Texture: Marble, Rough Surface, Mount Celestial, Travertine, Rockface Stone, Stone Ridged, Bush Hammered, Sandstone, Devine Mushroom Stone.



Texture: Marble, Rough Surface, Mount Celestial, Travertine, Rockface Stone, Stone Ridged, Bush Hammered, Sandstone, Devine Mushroom Stone.



Texture: Rough Surface, Stone Ridged, Bush Hammered, Travertine



Texture: Marble, Rough Surface

A low-angle, upward-looking photograph of a lush tropical forest. The image captures the intricate network of tree trunks and branches, with sunlight streaming through the dense canopy, creating a dappled light effect. The colors are vibrant greens and browns, emphasizing the natural beauty and complexity of the ecosystem.

Reducing Deforestation,
Saving Earth's Ozone Layer

Wood Series



Spliced Wood

Silk-mist Brown



Plain White

Cangshan Mountain Gray

Twilight Mountain Gray

Former Times

Sand Yellow

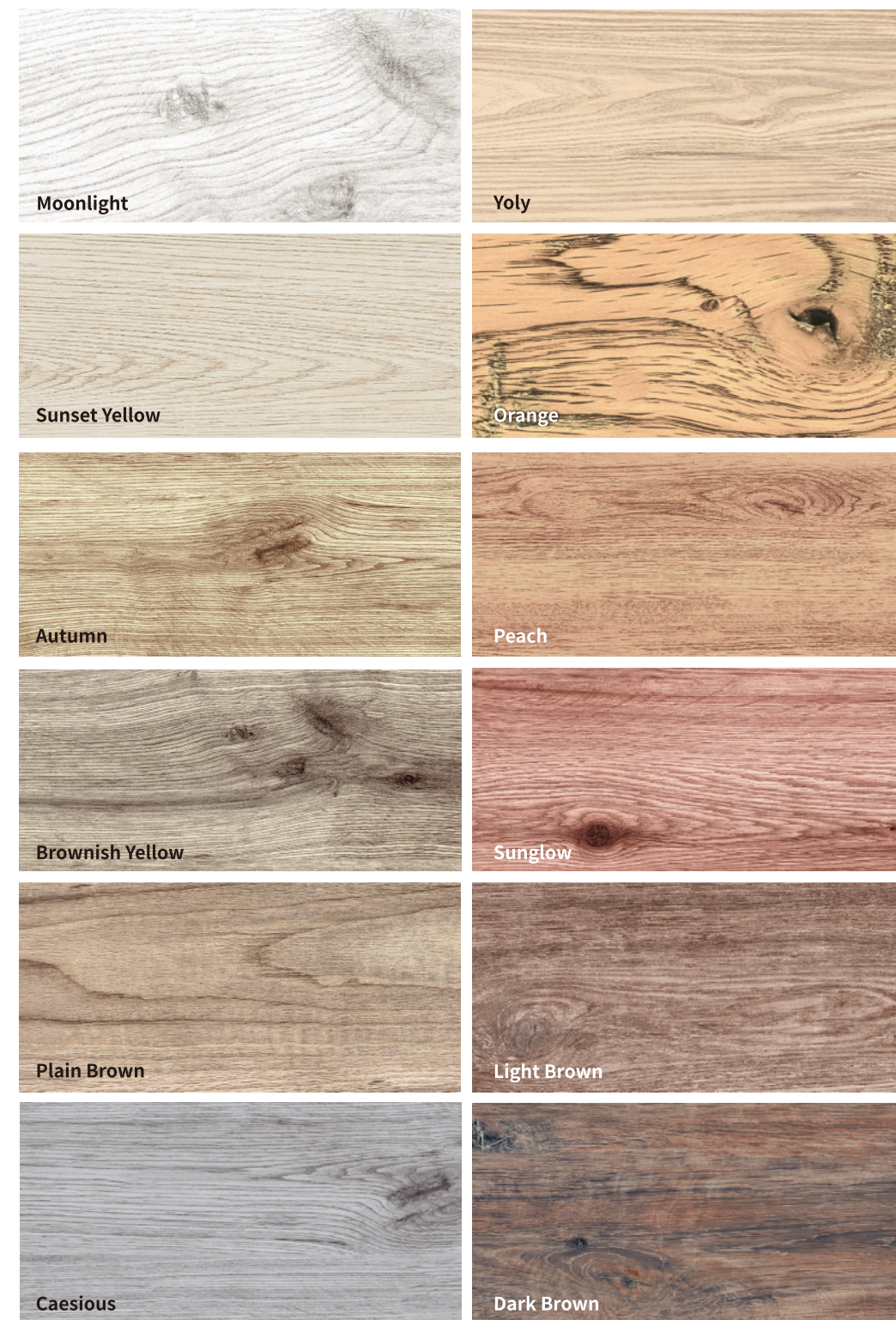
Silk-mist Brown

Generation	Standard size(mm)	Thickness(mm)	Packaging(mm)	Pcs/box	Sqm/box
3.0	1400 x 600	2.8(±1)			
	2800 x 1200				
Wooden case as per order quantity (subject to packaging fee)					



Poly Wood

Autumn



Generation	Standard size (mm)	Thickness (mm)	Packaging (mm)	Pcs/box	Sqm/box
3.0	1350 x 300	2.8(±1)	1380 x 620 x 65	42	17.01
	2700 x 300				
	2700 x 1200				
Wooden case as per order quantity (subject to packaging fee)					



Original Wood

Yoly



Generation	Standard size(mm)	Thickness(mm)	Packaging(mm)	Pcs/box	Sqm/box
3.0	1350 x 300	2.8(±1)	1380 x 620 x 65	42	17.01
	2700 x 300				
	2700 x 1200				
Wooden case as per order quantity (subject to packaging fee)					



Sawtooth Wood

Caesious



Generation	Standard size (mm)	Thickness (mm)	Packaging (mm)	Pcs/box	Sqm/box
3.0	1350 x 300	2.8(±1)	1380 x 620 x 65	42	17.01
	2700 x 300				
	2700 x 1200				
Wooden case as per order quantity (subject to packaging fee)					



**Material technology,
integrated with ethnic customs**

Weaving Series

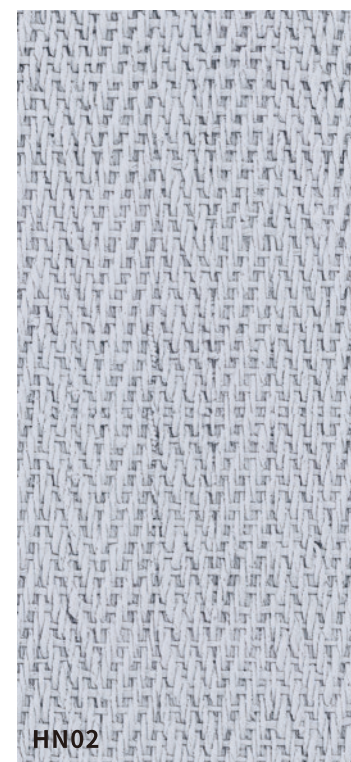


W Weaving

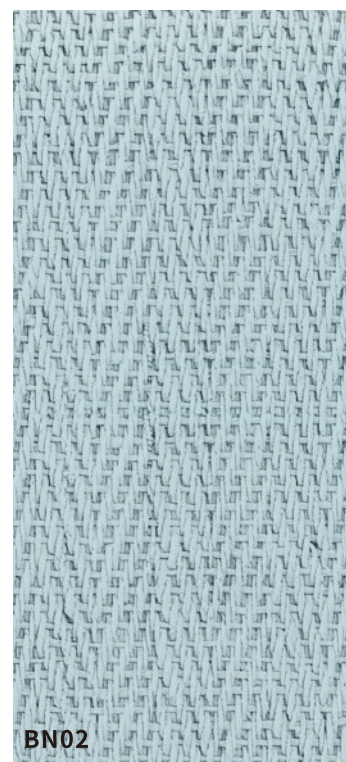
O01



WN01



HN02



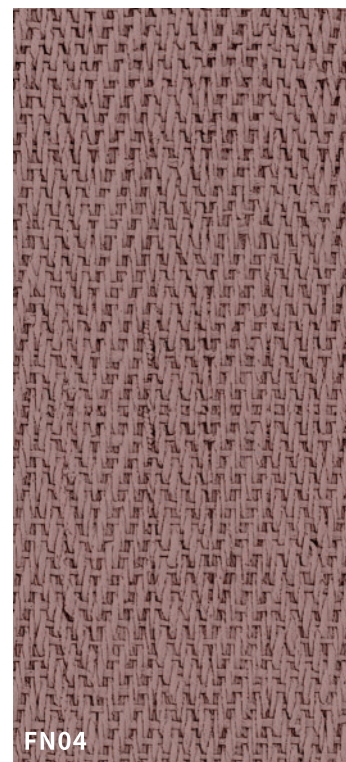
BN02



O01

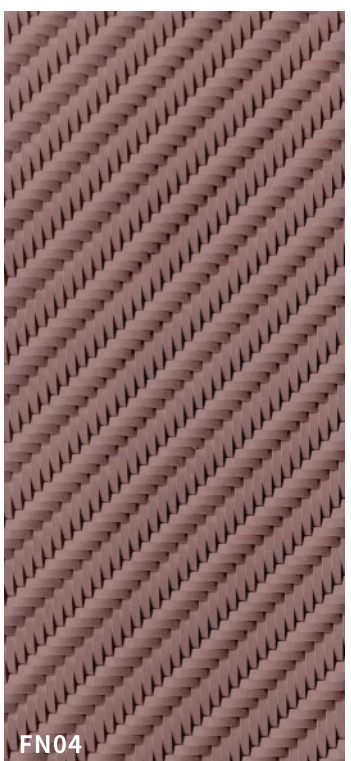
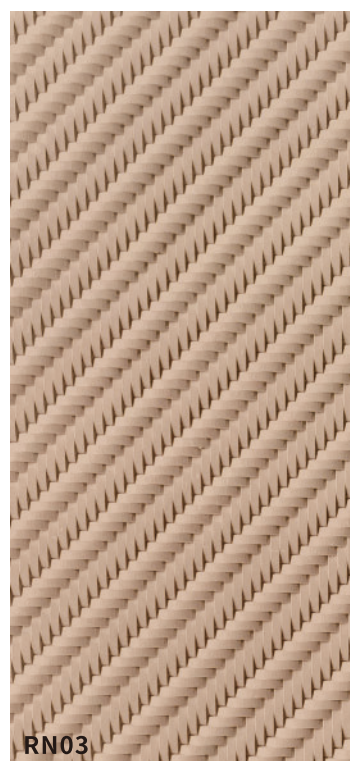
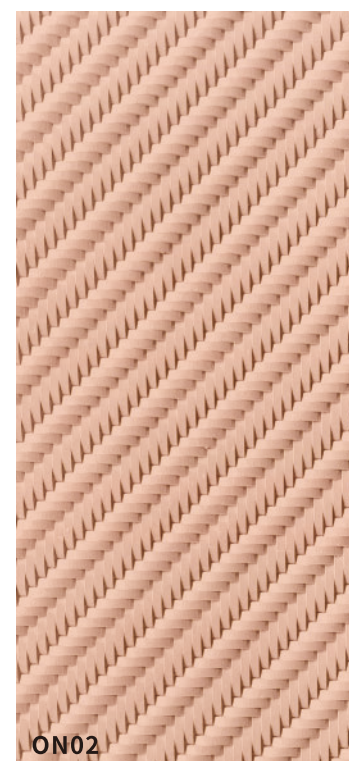
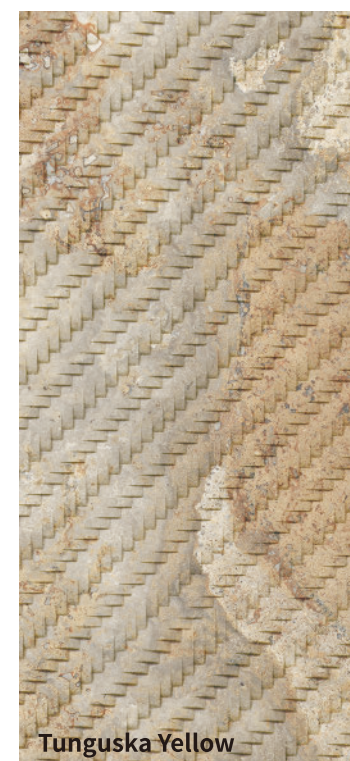
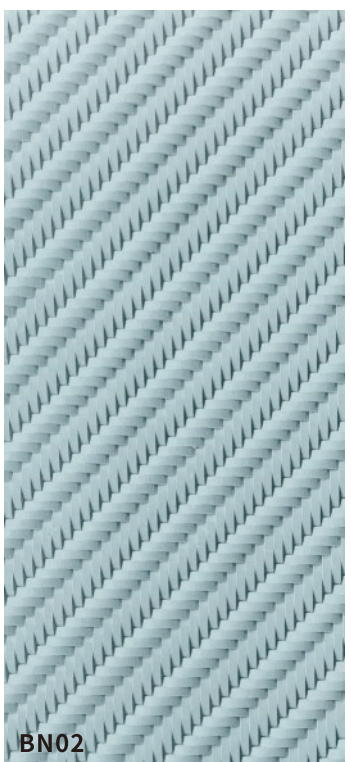
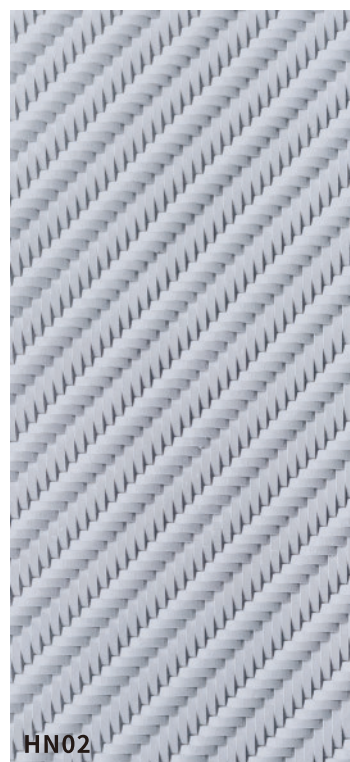
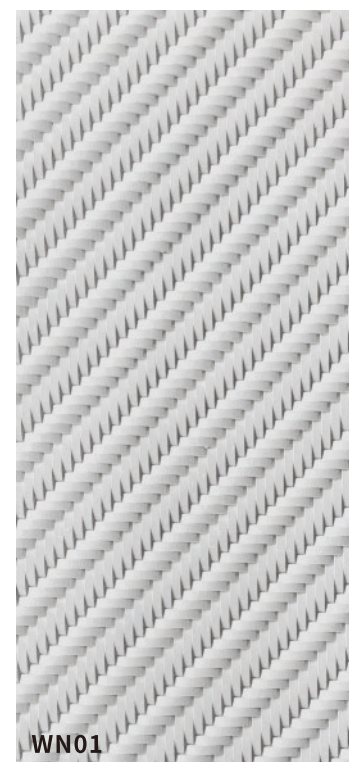
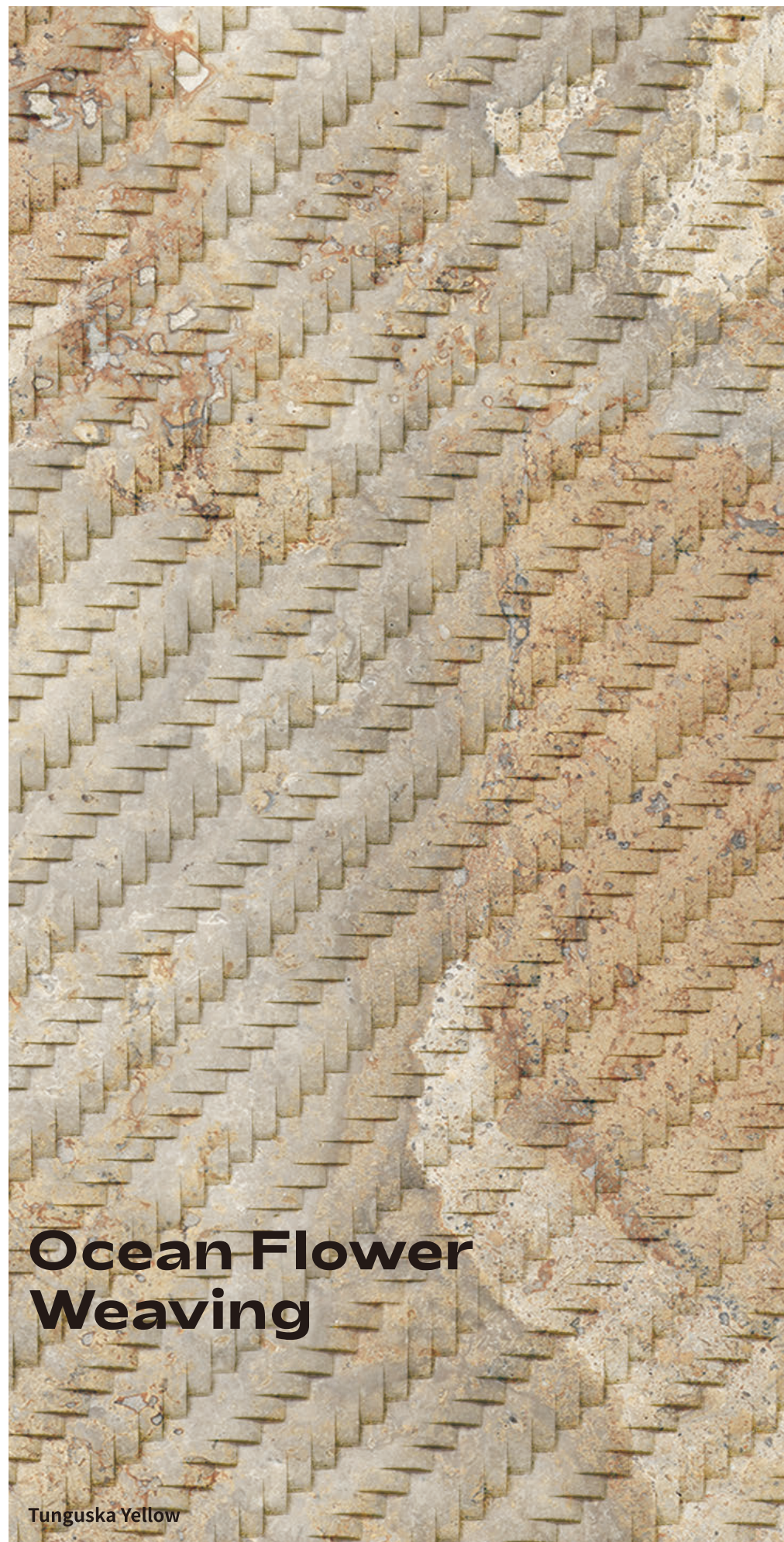


RN03

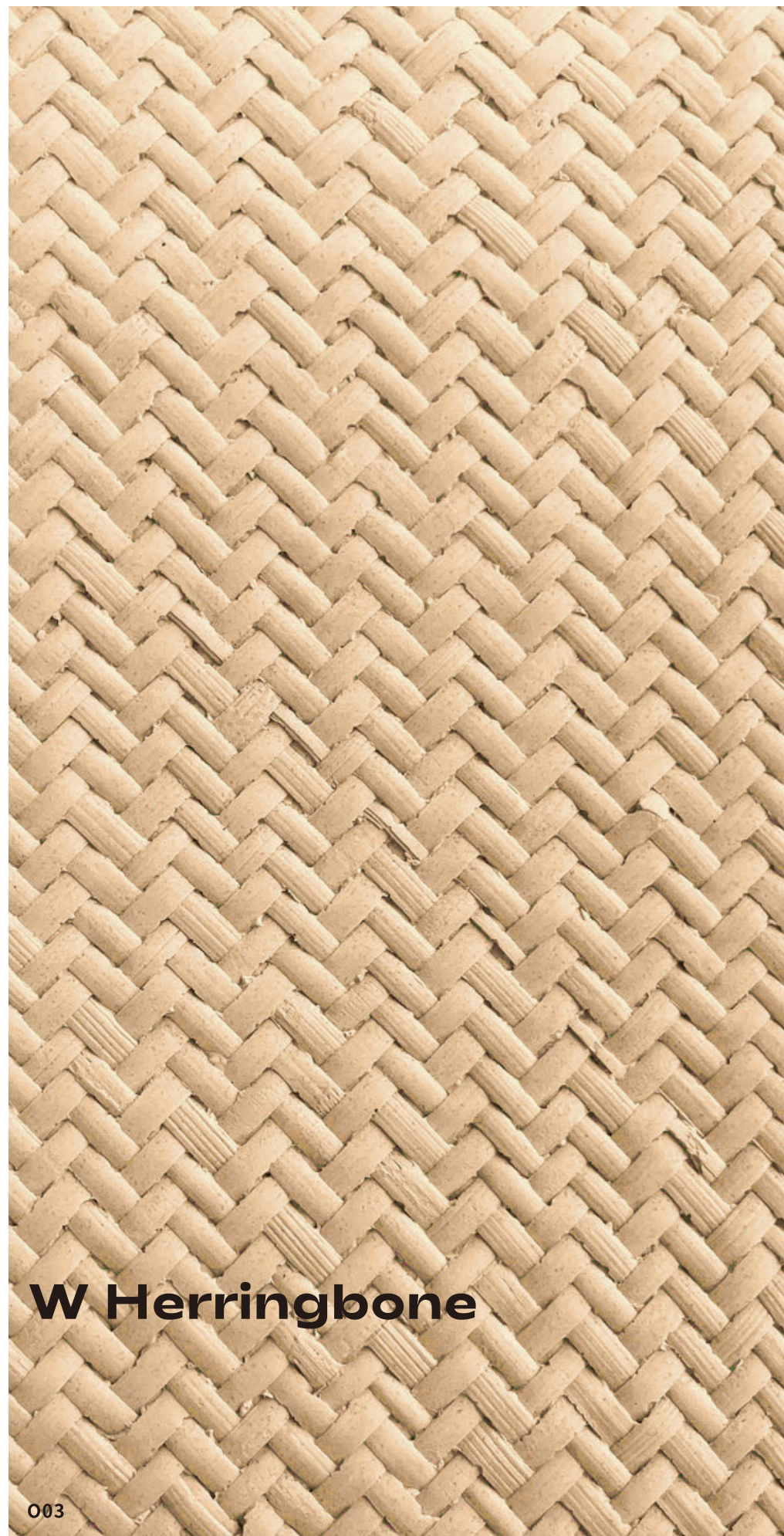


FN04

Generation	Standard size (mm)	Thickness (mm)	Packaging (mm)	Pcs/box	Sqm/box
3.0	1350 X 600	1-4	1370 X 620 X 90	8	6.48
	2700 X 1200				
Wooden case as per order quantity (subject to packaging fee)					



Generation	Standard size (mm)	Thickness (mm)	Packaging (mm)	Pcs/box	Sqm/box
3.0	1200 x 600	1-4	1220 x 620 x 75	14	10.08
	1200 x 1200				
	2400 x 1200				
			Wooden case as per order quantity (subject to packaging fee)		



W Herringbone

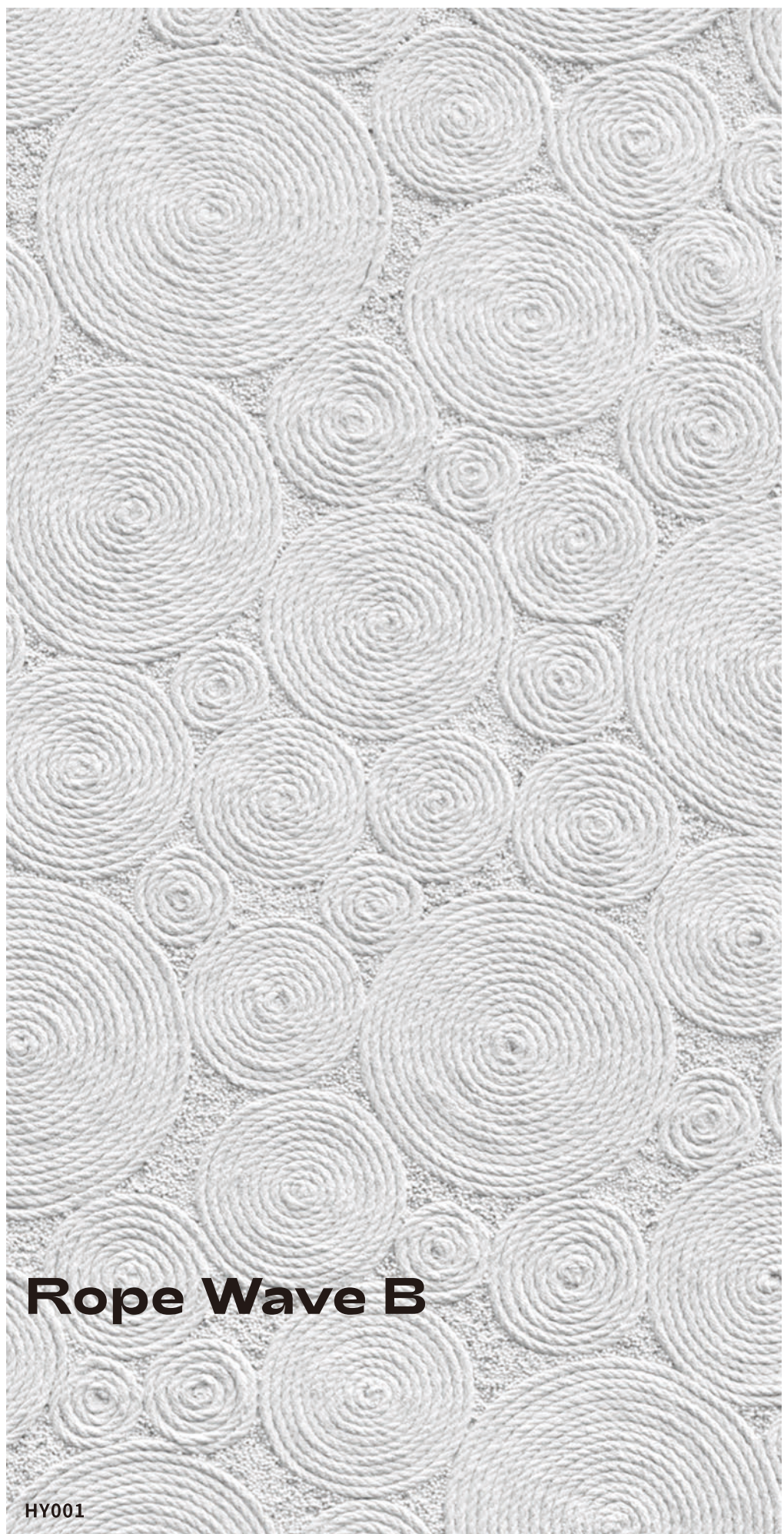
O03



Generation	Standard size(mm)	Thickness(mm)	Packaging(mm)	Pcs/box	Sqm/box
3.0	1200 x 600	1-4	1220 x 620 x 75	16	11.52
	1200 x 1200				
	2400 x 1200				
Wooden case as per order quantity (subject to packaging fee)					

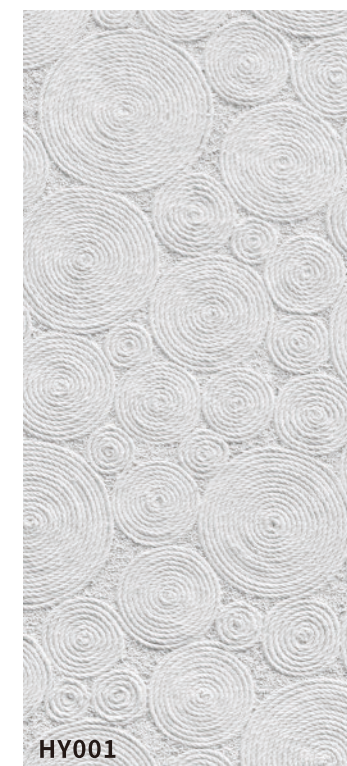


Generation	Standard size(mm)	Thickness(mm)	Packaging(mm)	Pcs/box	Sqm/box
3.0	1350 x 600	1-4	1370 x 620 x90	18	14.58
	2700 x 1200		Wooden case as per order quantity (subject to packaging fee)		

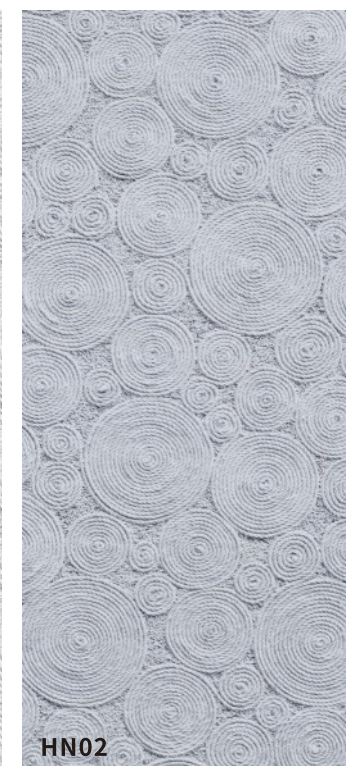


Rope Wave B

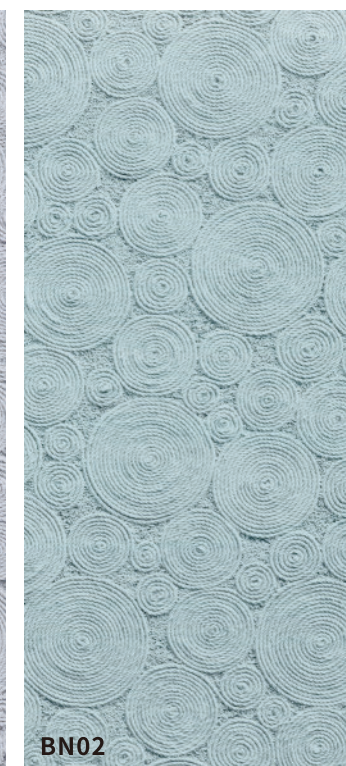
HY001



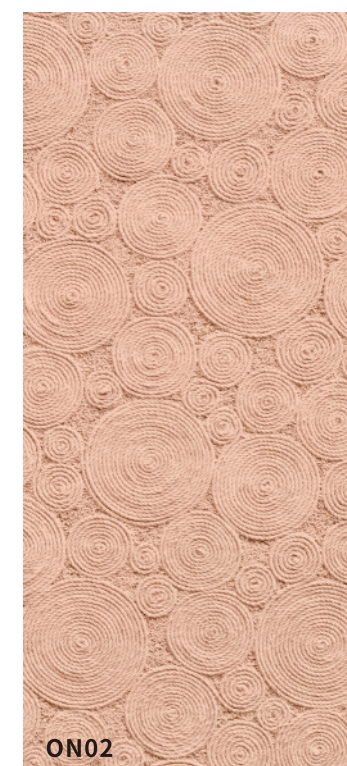
HY001



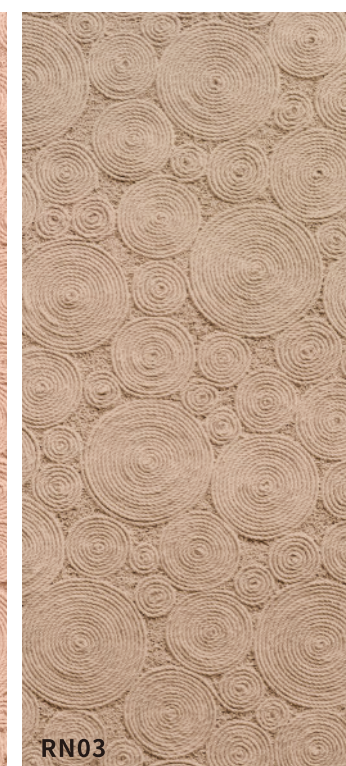
HN02



BN02



ON02

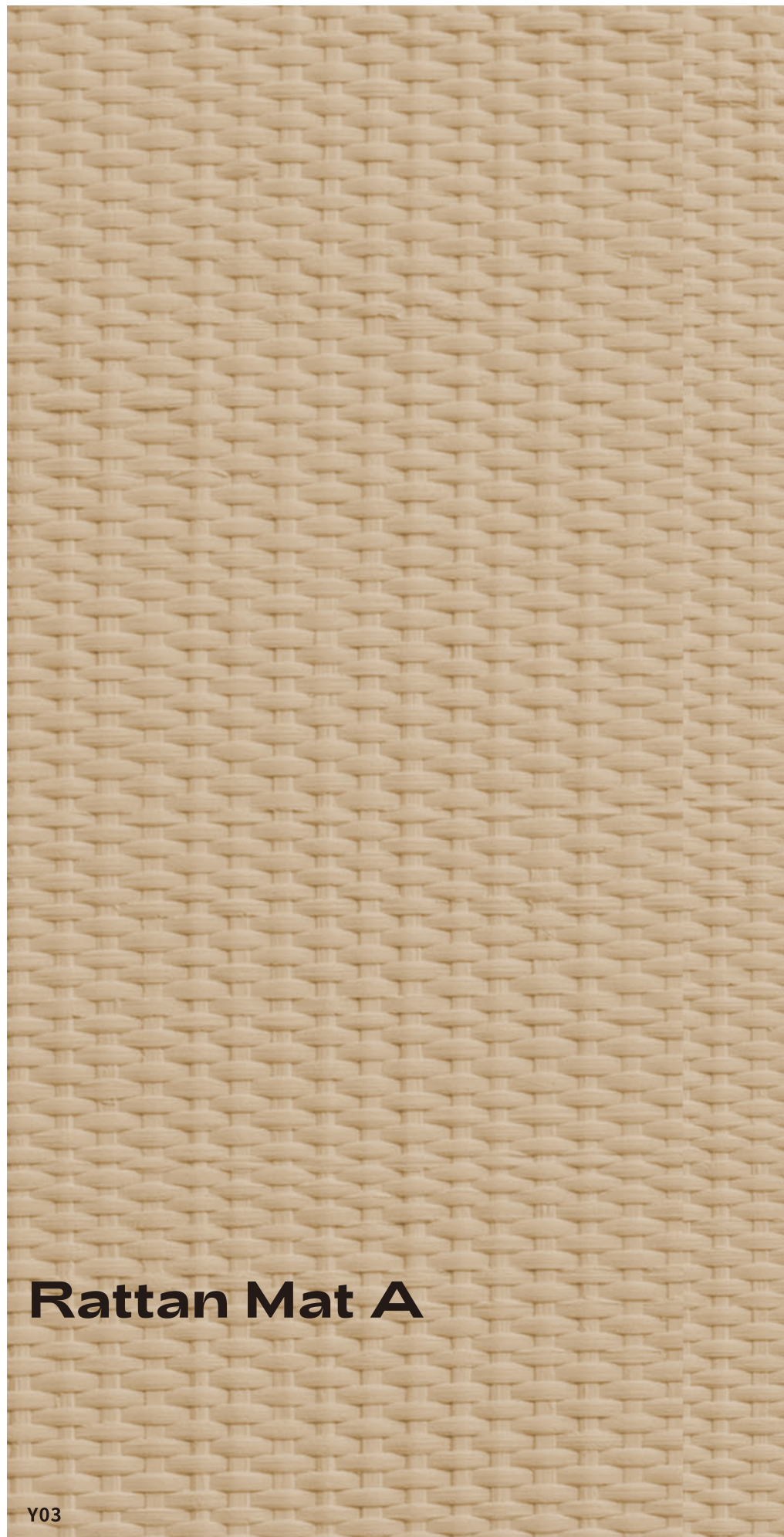


RN03



FN04

Generation	Standard size(mm)	Thickness(mm)	Packaging(mm)	Pcs/box	Sqm/box
3.0	1350 x 600	1-4	1370 x 620 x90	18	14.58
	2700 x 1200				

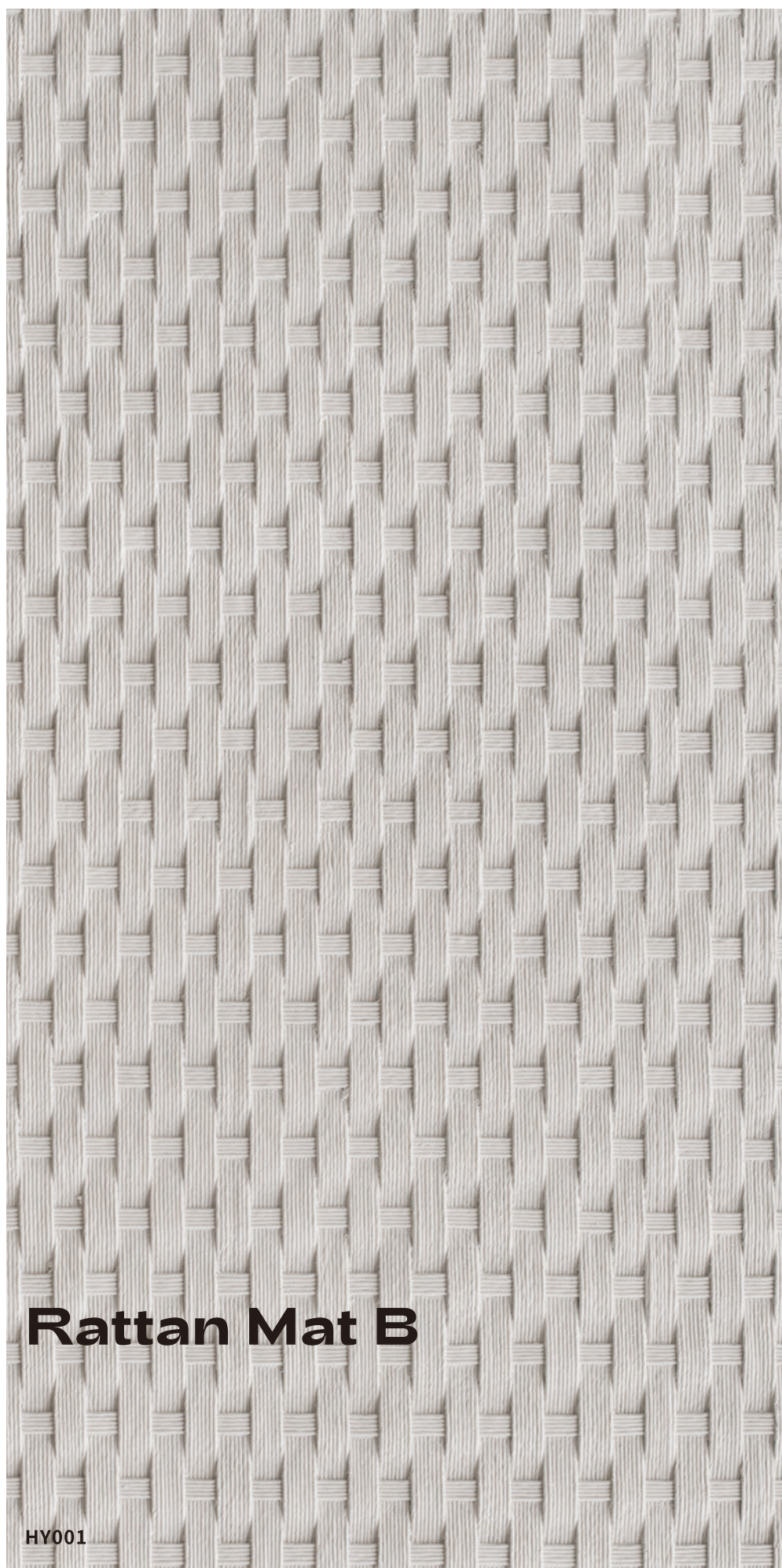


Rattan Mat A

Y03



Generation	Standard size(mm)	Thickness(mm)	Packaging(mm)	Pcs/box	Sqm/box
3.0	1350 x 600	1-4	1370 x 620 x90	18	14.58
	2700 x 1200				

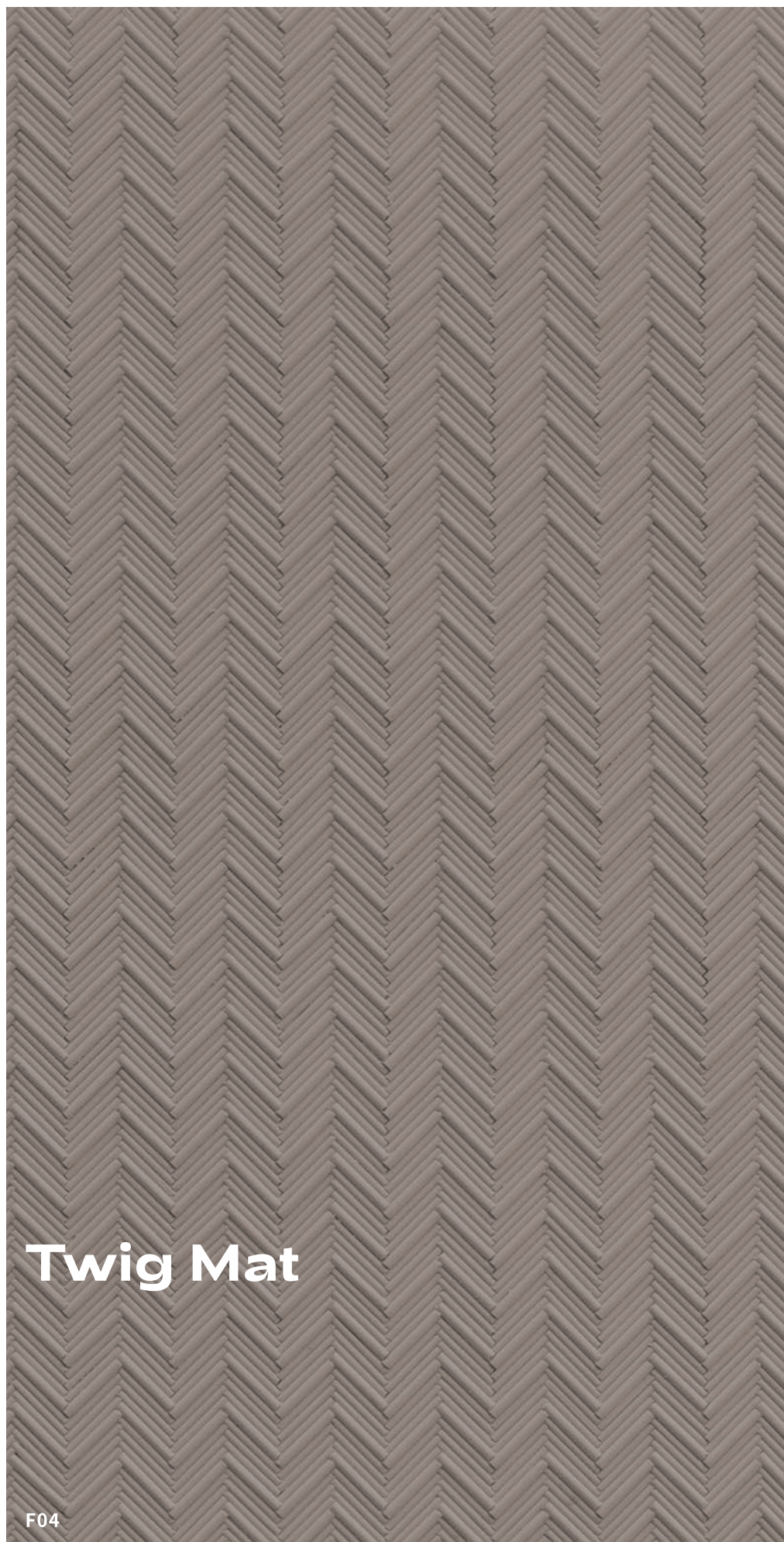


Rattan Mat B

HY001



Generation	Standard size(mm)	Thickness(mm)	Packaging(mm)	Pcs/box	Sqm/box
3.0	1200 x 600	3(±0.5)	1220 x 620 x75	16	11.52
	2400 x 1200				

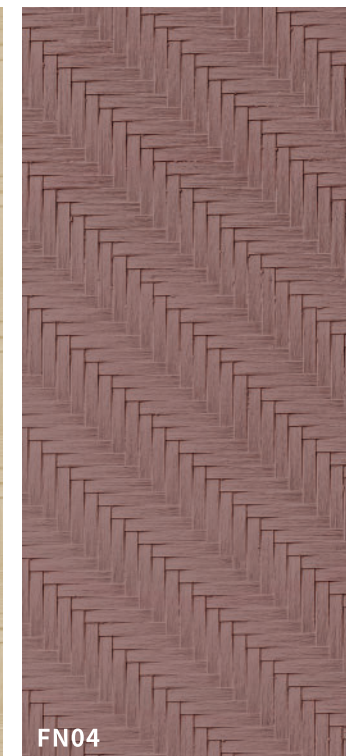
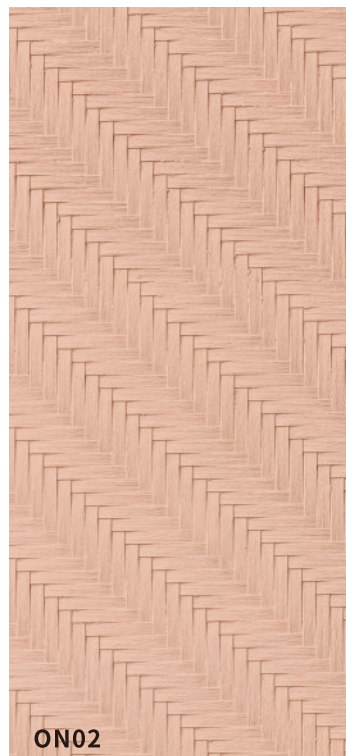
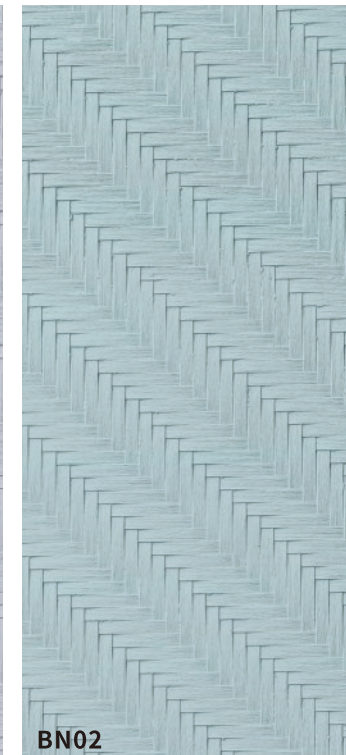


Twig Mat

F04



Generation	Standard size(mm)	Thickness(mm)	Packaging(mm)	Pcs/box	Sqm/box
3.0	1350 x 600	1-4	1380 x 620 x75	12	12.15
	2700 x 1200		Wooden case as per order quantity (subject to packaging fee)		



Generation	Standard size(mm)	Thickness(mm)	Packaging(mm)	Pcs/box	Sqm/box
3.0	1350 x 600	1-4	1370 x 620 x90	18	14.58
	2700 x 1200				



**Showcasing a diverse
collection of global bricks,
Exploring the rich history and
evolution of brick architecture.**

Brick Series

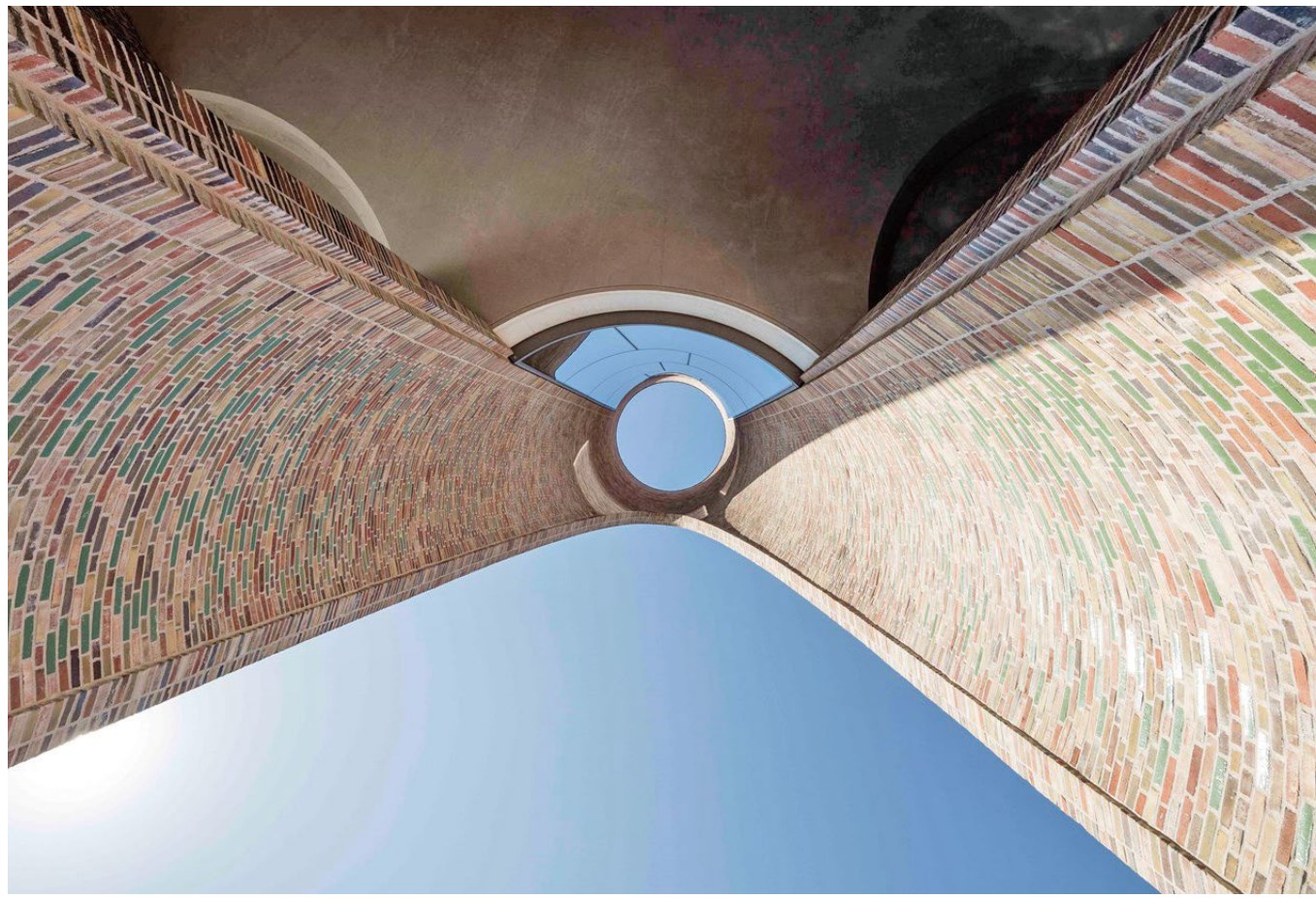


G Facing Brick

Os Cyan



Generation	Standard size(mm)	Thickness(mm)	Packaging(mm)	Pcs/box	Sqm/box
4.0	480x120	2.5 (±0.5)			



G Facing Brick

Os Red



Idyllic Medium Grey

Inks Dark Brown

Palace Orange-green

British Blue

Inks Grey

Inks Cyan

Knight Grey

Knight Cyan

Palace Brown-green

Os Orange

Nilo Brown

Knight Red

Os Cyan

Os Red

Generation	Standard size(mm)	Thickness(mm)	Packaging(mm)	Pcs/box	Sqm/box
4.0	480x120	2.5 (±0.5)			



Generation	Standard size(mm)	Thickness(mm)	Packaging(mm)	Pcs/box	Sqm/box
4.0	480x120	2.5 (±0.5)			

Performance comparison between eCovering and traditional building decorative materials

No./ Performance	eCovering	Ceramic Slab	Wall Cloth	Natural Stone	Coating				Wood Veneer		PVC Panel		
					Emulsion Paint	Diatom Mud	Mud Paint	Inorganic painting	Wood Veneer	Artificial Wood Veneer			
1	Fire Sately	A Class	A Class	C Class	A Class	C Class	A Class	A Class	B Class	C Class	C Class	B Class	
2	Environmental Friendliness	Application	Excellent, UL certificate	Good, Environmental Labeling	Depends on quality. VOCs are typically above safe figures level	Depends on quality. Some varieties are radioactive	Poor VOCs are typically above safe figures level	Good No VOC release	Good No VOC release	Depends on quality	Depends on quality	Poor VOCs are typically above safe figures level	Depends on quality. VOCs are typically above safe figures level
		Production process	3R* principles matched Low Energy Consumption Zero Emission Zero Pollution Renewable	Fails to match 3R* principles High Energy Consumption High Emission High Pollution Non-renewable	Depends on quality	Fails to match 3R* principles High Energy Consumption High Emission High Pollution Non-renewable	Depends on quality	Fails to match 3R* principles Destroy Nature Non-renewable	3R* principles matched Low Energy Consumption Zero Emission Zero Pollution	Depends on quality	Fails to match 3R* principles Destroy Nature Non-renewable	Fails to match 3R* principles High Energy Consumption High Emission High Pollution Non-renewable	Fails to match 3R principles High Energy Consumption Non-renewable
3	Moisture Absorption and Dampproof capacity	Excellent in moisture proofing. Keeps structure dry in wet conditions	Non-moisture proof Condensation in wet conditions	Non-moisture proof Condensation in wet conditions	Non-moisture proof Condensation in wet conditions	Non-moisture proof Condensation in wet conditions	Excellent in moisture proofing. Keeps structure dry in wet conditions	Excellent in moisture proofing. Keeps structure dry in wet conditions	Non-moisture proof Condensation in wet conditions	Non-moisture proof Condensation in wet conditions	Non-moisture proof Condensation in wet conditions	Non-moisture proof Condensation in wet conditions	
4	Moldproof	Good	Good	Poor	Good	Poor	Varies in quality	Good	Varies in quality	Poor	Good	Good	
5	Breathability	Excellent	Poor	Poor	Excellent	Poor	Excellent	Excellent	Good	Excellent	Poor	Poor	
6	Air-cleaning capacity	Able to absorb and decompose formaldehyde and odor due to its catalytic UV feature.	Unable to absorb formaldehyde Some are able to decompose formaldehyde on the surface	No	No	No	Able to absorb and decompose formaldehyde and odor	Able to absorb and decompose formaldehyde and odor	No	No	No	No	
7	Durability	Durable No edge lifting Fastness Moldproof No emptying swell**	Durable No edge lifting Fastness Emptying swell**	Not durable, remains shape for 1-2 years Color fading Easy to mildew	Durable No edge lifting Fastness Emptying swell**	Not durable Fades fast, especially dark colors Easy to mildew	Not durable No peeling Softening with water Powdering	Durable No peeling Fastness Moldproof Remains hard effected by water	Durable Fastness Moldproof Remains hard effected by water	Not durable Easy rots Easy to mildew	Not durable Easy to deform Edge lifting Color shading	Durable No edge lifting Moldproof No emptying swell	
8	Salt Spray Resistance	Good	Good	Good	Good	Poor	Poor	Good	Good	Poor	Poor	Good	
9	Application/construction method complexity	Simple, No anchoring required	Complex	Simple	Complex	Simple	Complex	Situation Depends	Complex	Simple	Simple	Simple	

* 3R principles refer to reducing, reusing and recycling.

** Emptying Swell refers to an effect caused by a high air pressure created in the cavity under the low/none-air permeable cladding that causes its detachment from the surface.

Certification

1. BUREAU VERITAS Product Carbon Footprint Verification Certification
2. UL: American Conference of Governmental Industrial
3. EU EPD Environmental Product Certification
4. EU CE certification and Class A fireproof certification
5. Russia (GoST) standard certification
6. Polish Conference of Governmental Industrial
7. TPAT Customs-Trade Partnership
8. 2014/90/EU MED 96/98/ECe 2014/
9. Czech Republic fire safety A Class
10. Russia fire safety A Class
11. Malaysia fire safety A class
12. Singapore Greenable Green certification
13. Korea Green Building Material certification
14. UNIEN ISO 14021: Products contain at least 40 percent recyclable material before consumption
15. China certification and Class A fireproof certification
16. UNIEN ISO9001 National Quality Management System certification
17. China National Safety Standardization Production Certificate
18. China National Occupational Safety and Health Management System Administration
19. CCEP(China Certification for Environmental Products)
20. China 3-star Greenable Green certification

